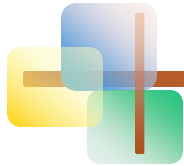


# Statistics for Business and Economics

8<sup>th</sup> Edition



---

## Chapter 7

### Estimation: Single Population



# Chapter Goals

---

**After completing this chapter, you should be able to:**

- Distinguish between a point estimate and a confidence interval estimate
- Construct and interpret a confidence interval estimate for a single population mean using both the  $Z$  and  $t$  distributions
- Form and interpret a confidence interval estimate for a single population proportion
- Create confidence interval estimates for the variance of a normal population
- Determine the required sample size to estimate a mean or proportion within a specified margin of error



# Confidence Intervals

---

## Contents of this chapter:

- Confidence Intervals for the **Population Mean,  $\mu$** 
  - when Population Variance  $\sigma^2$  is **Known**
  - when Population Variance  $\sigma^2$  is **Unknown**
- Confidence Intervals for the **Population Proportion,  $P$**  (large samples)
- Confidence interval estimates for the **variance** of a normal population
- Finite population corrections
- Sample-size determination

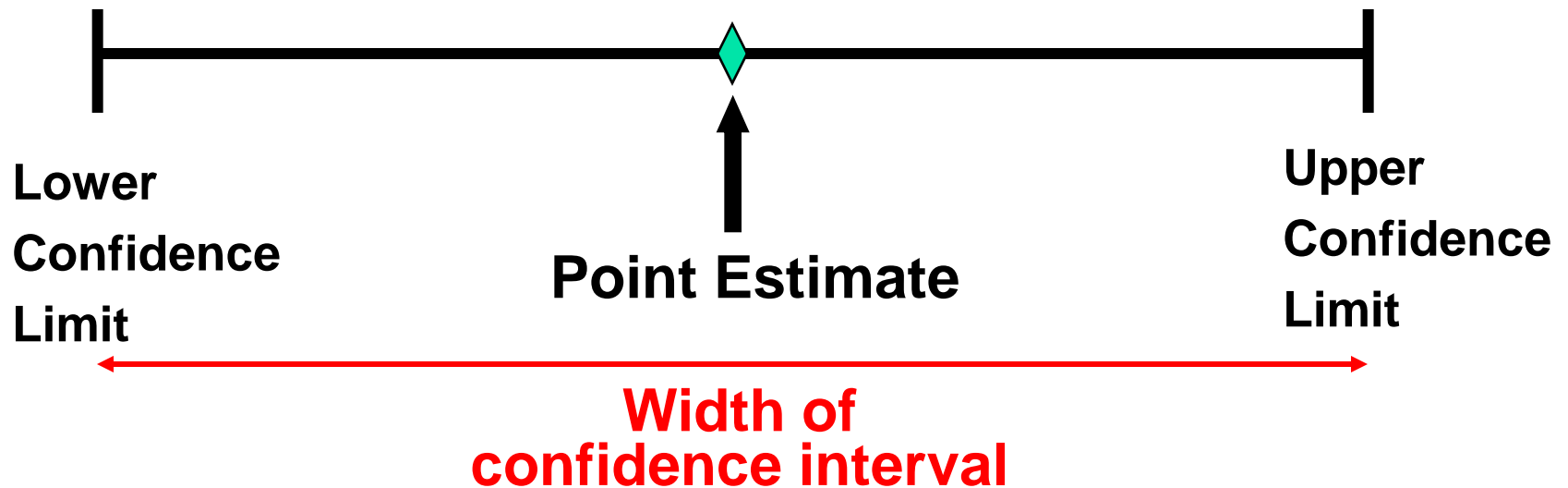
# Properties of Point Estimators

---

- An **estimator** of a population parameter is
  - a random variable that depends on sample information . . .
  - whose value provides an approximation to this unknown parameter
- A specific value of that random variable is called an **estimate**

# Point and Interval Estimates

- A **point estimate** is a single number,
- a **confidence interval** provides additional information about variability



# Point Estimates

We can estimate a Population Parameter ...		with a Sample Statistic (a Point Estimate)
Mean	$\mu$	$\bar{x}$
Proportion	$P$	$\hat{p}$



# Unbiasedness

---

- A point estimator  $\hat{\theta}$  is said to be an **unbiased estimator** of the parameter  $\theta$  if its expected value is equal to that parameter:

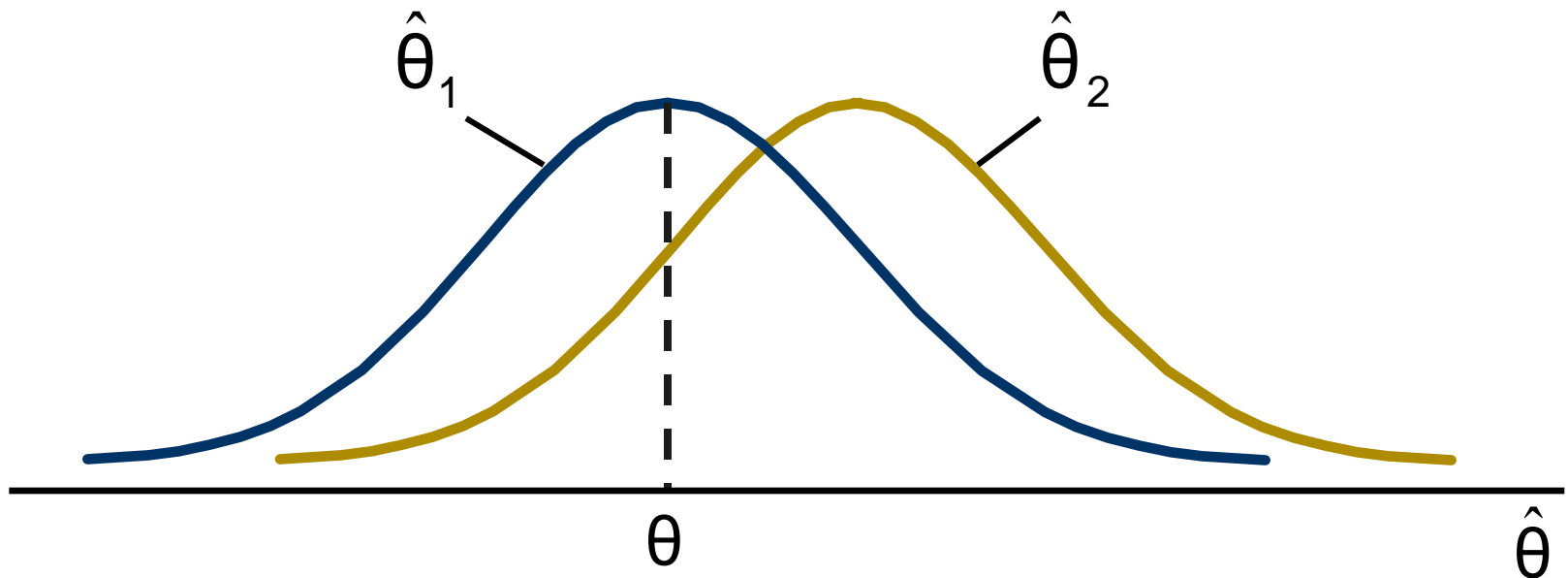
$$E(\hat{\theta}) = \theta$$

- Examples:
  - The sample mean  $\bar{x}$  is an unbiased estimator of  $\mu$
  - The sample variance  $s^2$  is an unbiased estimator of  $\sigma^2$
  - The sample proportion  $\hat{p}$  is an unbiased estimator of  $P$

# Unbiasedness

(continued)

- $\hat{\theta}_1$  is an unbiased estimator,  $\hat{\theta}_2$  is biased:





# Bias

- Let  $\hat{\theta}$  be an estimator of  $\theta$
- The **bias** in  $\hat{\theta}$  is defined as the difference between its mean and  $\theta$

$$\text{Bias}(\hat{\theta}) = E(\hat{\theta}) - \theta$$

- The bias of an unbiased estimator is 0



# Most Efficient Estimator

---

- Suppose there are several unbiased estimators of  $\theta$
- The **most efficient estimator** or the **minimum variance unbiased estimator** of  $\theta$  is the unbiased estimator with the **smallest variance**
- Let  $\hat{\theta}_1$  and  $\hat{\theta}_2$  be two unbiased estimators of  $\theta$ , based on the same number of sample observations. Then,
  - $\hat{\theta}_1$  is said to be more efficient than  $\hat{\theta}_2$  if  $\text{Var}(\hat{\theta}_1) < \text{Var}(\hat{\theta}_2)$
  - The **relative efficiency** of  $\hat{\theta}_1$  with respect to  $\hat{\theta}_2$  is the ratio of their variances:

$$\text{Relative Efficiency} = \frac{\text{Var}(\hat{\theta}_2)}{\text{Var}(\hat{\theta}_1)}$$



# Confidence Interval Estimation

---

- How much uncertainty is associated with a point estimate of a population parameter?
- An **interval estimate** provides more information about a population characteristic than does a **point estimate**
- Such interval estimates are called **confidence interval estimates**



# Confidence Interval Estimate

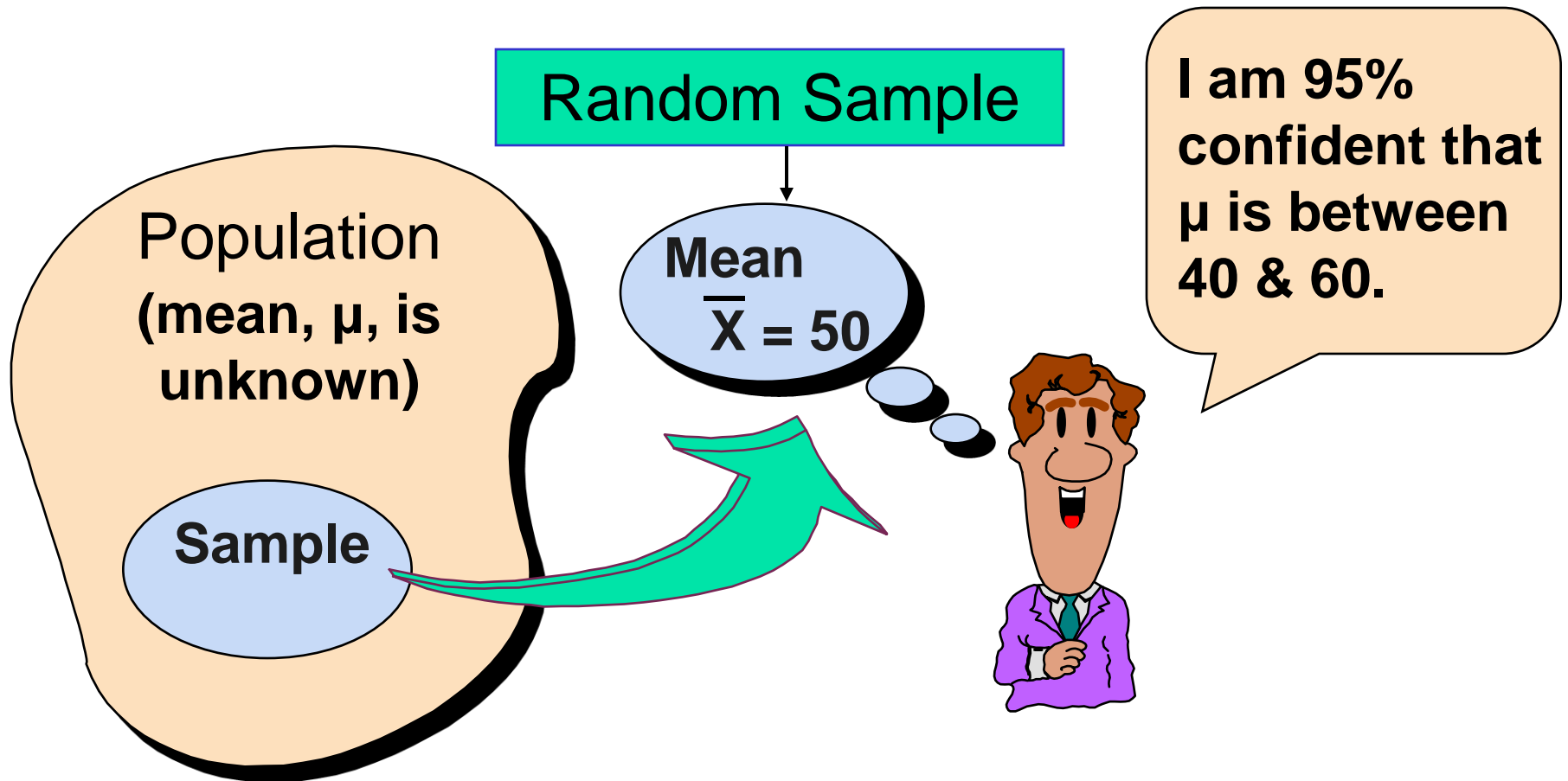
---

- An interval gives a **range** of values:
  - Takes into consideration variation in sample statistics from sample to sample
  - Based on observation from 1 sample
  - Gives information about closeness to unknown population parameters
  - Stated in terms of level of confidence
    - Can never be 100% confident

# Confidence Interval and Confidence Level

- If  $P(a < \theta < b) = 1 - \alpha$  then the interval from  $a$  to  $b$  is called a  $100(1 - \alpha)\%$  confidence interval of  $\theta$ .
- The quantity  $100(1 - \alpha)\%$  is called the confidence level of the interval
  - $\alpha$  is between 0 and 1
  - In repeated samples of the population, the true value of the parameter  $\theta$  would be contained in  $100(1 - \alpha)\%$  of intervals calculated this way.
  - The confidence interval calculated in this manner is written as  $a < \theta < b$  with  $100(1 - \alpha)\%$  confidence

# Estimation Process





# Confidence Level, $(1-\alpha)$

---

*(continued)*

- Suppose confidence level = 95%
- Also written  $(1 - \alpha) = 0.95$
- A relative frequency interpretation:
  - From repeated samples, 95% of all the confidence intervals that can be constructed of size  $n$  will contain the unknown true parameter
- A specific interval either will contain or will not contain the true parameter
  - No probability involved in a specific interval



# General Formula

---

- The general form for all confidence intervals is:

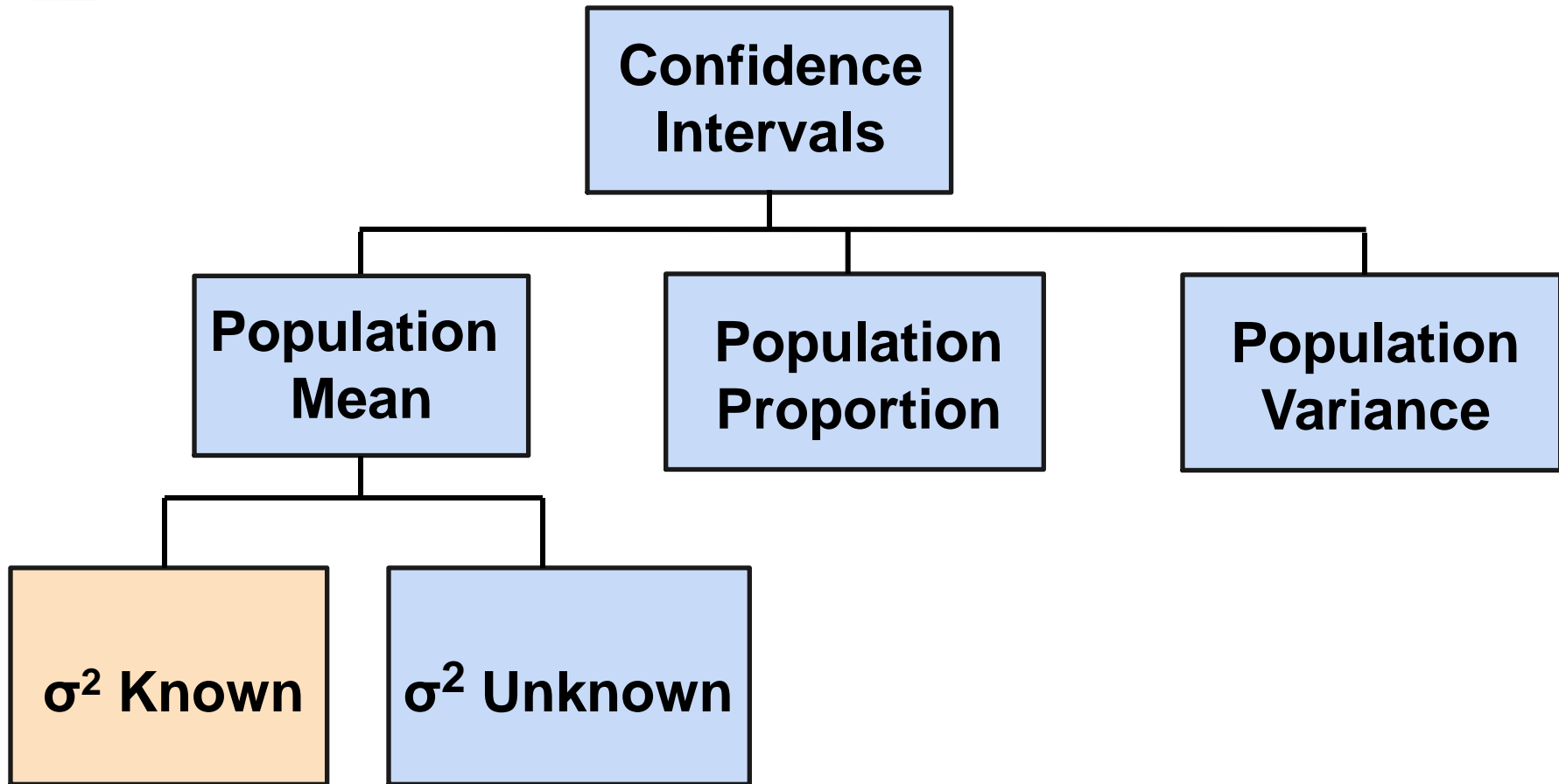
$$\hat{\theta} \pm ME$$

**Point Estimate  $\pm$  Margin of Error**

- The value of the margin of error depends on the desired level of confidence



# Confidence Intervals



(From normally distributed populations)

# Confidence Interval Estimation for the Mean ( $\sigma^2$ Known)

7.2

- Assumptions
  - Population variance  $\sigma^2$  is known
  - Population is normally distributed
  - If population is not normal, use large sample
- Confidence interval estimate:

$$\bar{X} \pm z_{\alpha/2} \frac{\sigma}{\sqrt{n}}$$

(where  $z_{\alpha/2}$  is the normal distribution value for a probability of  $\alpha/2$  in each tail)

# Confidence Limits

- The confidence interval is

$$\bar{X} \pm z_{\alpha/2} \frac{\sigma}{\sqrt{n}}$$

- The endpoints of the interval are

$$\text{UCL} = \bar{X} + z_{\alpha/2} \frac{\sigma}{\sqrt{n}}$$

Upper confidence limit

$$\text{LCL} = \bar{X} - z_{\alpha/2} \frac{\sigma}{\sqrt{n}}$$

Lower confidence limit

# Margin of Error

- The confidence interval,

$$\bar{x} \pm z_{\alpha/2} \frac{\sigma}{\sqrt{n}}$$

- Can also be written as  $\bar{x} \pm ME$   
where **ME** is called the **margin of error**

$$ME = z_{\alpha/2} \frac{\sigma}{\sqrt{n}}$$

- The **interval width**,  $w$ , is equal to twice the margin of error



# Reducing the Margin of Error

---

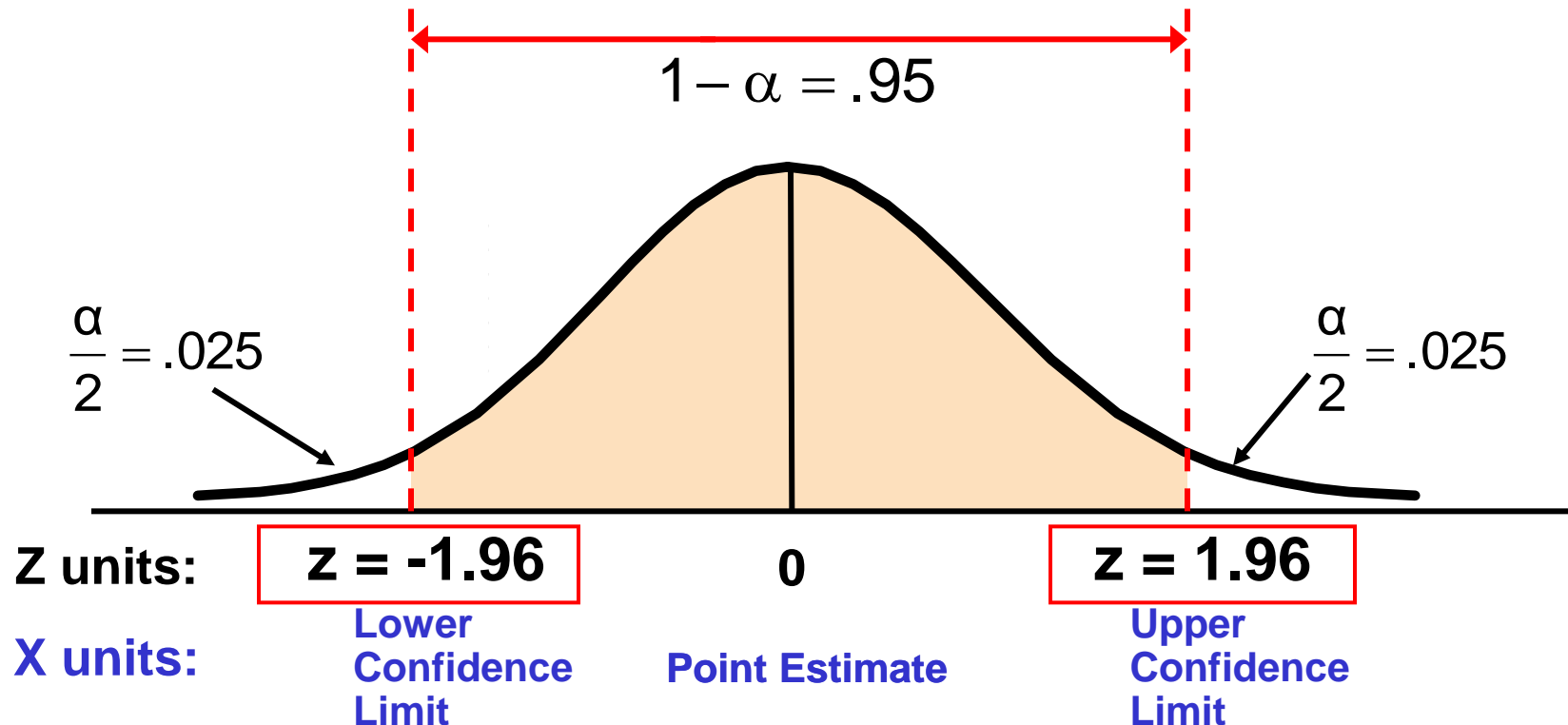
$$ME = z_{\alpha/2} \frac{\sigma}{\sqrt{n}}$$

The margin of error can be reduced if

- the population standard deviation can be reduced ( $\sigma \downarrow$ )
- The sample size is increased ( $n \uparrow$ )
- The confidence level is decreased,  $(1 - \alpha) \downarrow$

# Finding $z_{\alpha/2}$

- Consider a 95% confidence interval:



- Find  $z_{.025} = \pm 1.96$  from the standard normal distribution table



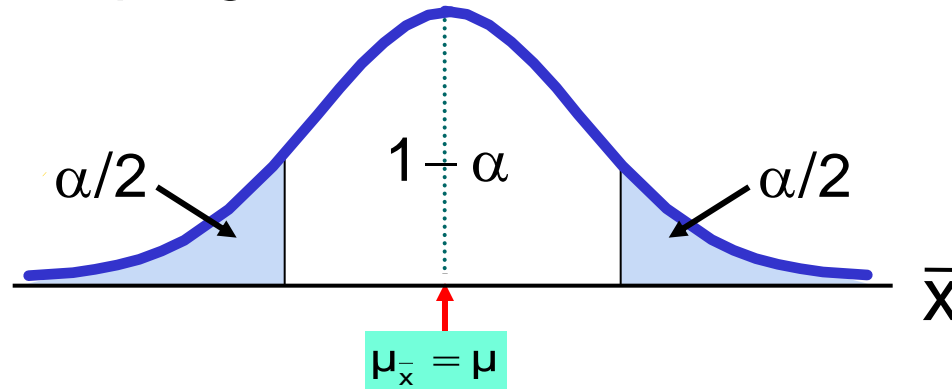
# Common Levels of Confidence

- Commonly used confidence levels are 90%, 95%, 98%, and 99%

<b>Confidence Level</b>	<b>Confidence Coefficient, <math>1 - \alpha</math></b>	<b><math>Z_{\alpha/2}</math> value</b>
<b>80%</b>	<b>.80</b>	<b>1.28</b>
<b>90%</b>	<b>.90</b>	<b>1.645</b>
<b>95%</b>	<b>.95</b>	<b>1.96</b>
<b>98%</b>	<b>.98</b>	<b>2.33</b>
<b>99%</b>	<b>.99</b>	<b>2.58</b>
<b>99.8%</b>	<b>.998</b>	<b>3.08</b>
<b>99.9%</b>	<b>.999</b>	<b>3.27</b>

# Intervals and Level of Confidence

## Sampling Distribution of the Mean

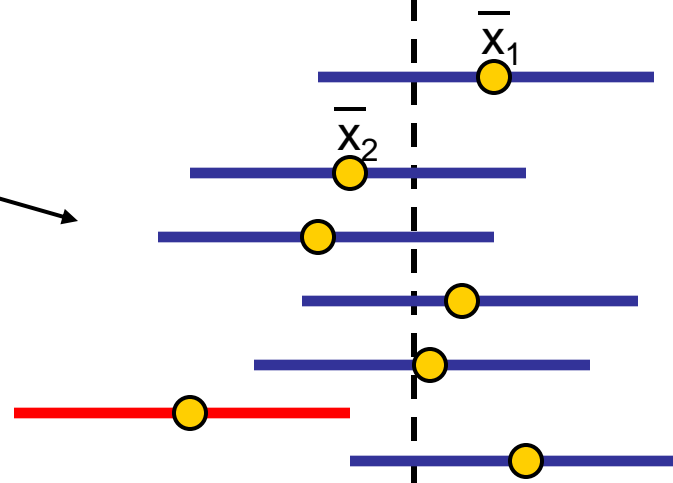


Intervals  
extend from

$$\text{LCL} = \bar{x} - z \frac{\sigma}{\sqrt{n}}$$

to

$$\text{UCL} = \bar{x} + z \frac{\sigma}{\sqrt{n}}$$



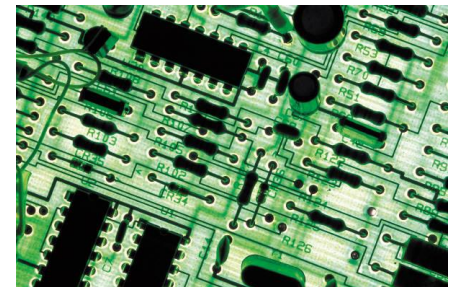
Confidence Intervals

100(1- $\alpha$ )%  
of intervals  
constructed  
contain  $\mu$ ;  
100( $\alpha$ )% do  
not.



# Example

- A sample of 11 circuits from a large normal population has a mean resistance of 2.20 ohms. We know from past testing that the population standard deviation is 0.35 ohms.
- Determine a 95% confidence interval for the true mean resistance of the population.



# Example

(continued)

- A sample of 11 circuits from a large normal population has a mean resistance of 2.20 ohms. We know from past testing that the population standard deviation is .35 ohms.

- **Solution:**

$$\bar{x} \pm z_{\alpha/2} \frac{\sigma}{\sqrt{n}}$$

$$= 2.20 \pm 1.96 (.35/\sqrt{11})$$

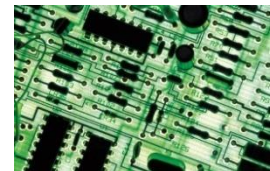
$$= 2.20 \pm .2068$$

$$1.9932 < \mu < 2.4068$$

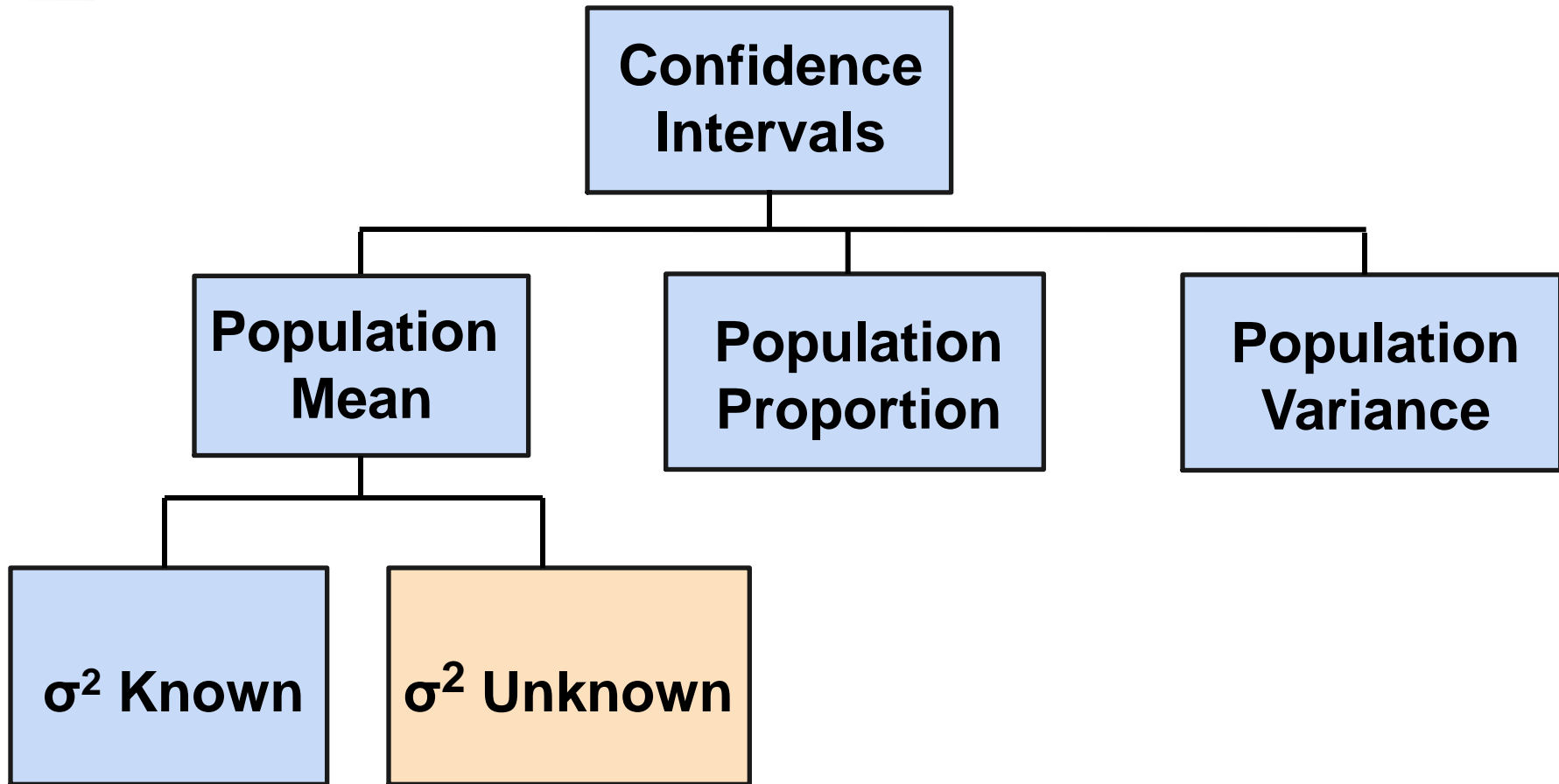


# Interpretation

- We are 95% confident that the true mean resistance is between 1.9932 and 2.4068 ohms
- Although the true mean may or may not be in this interval, 95% of intervals formed in this manner will contain the true mean



# Confidence Interval Estimation for the Mean ( $\sigma^2$ Unknown)



(From normally distributed populations)



# Student's t Distribution

---

- Consider a random sample of  $n$  observations
  - with mean  $\bar{x}$  and standard deviation  $s$
  - from a normally distributed population with mean  $\mu$
- Then the variable

$$t = \frac{\bar{x} - \mu}{s/\sqrt{n}}$$

follows the **Student's t distribution** with  $(n - 1)$  degrees of freedom



# Student's t Distribution

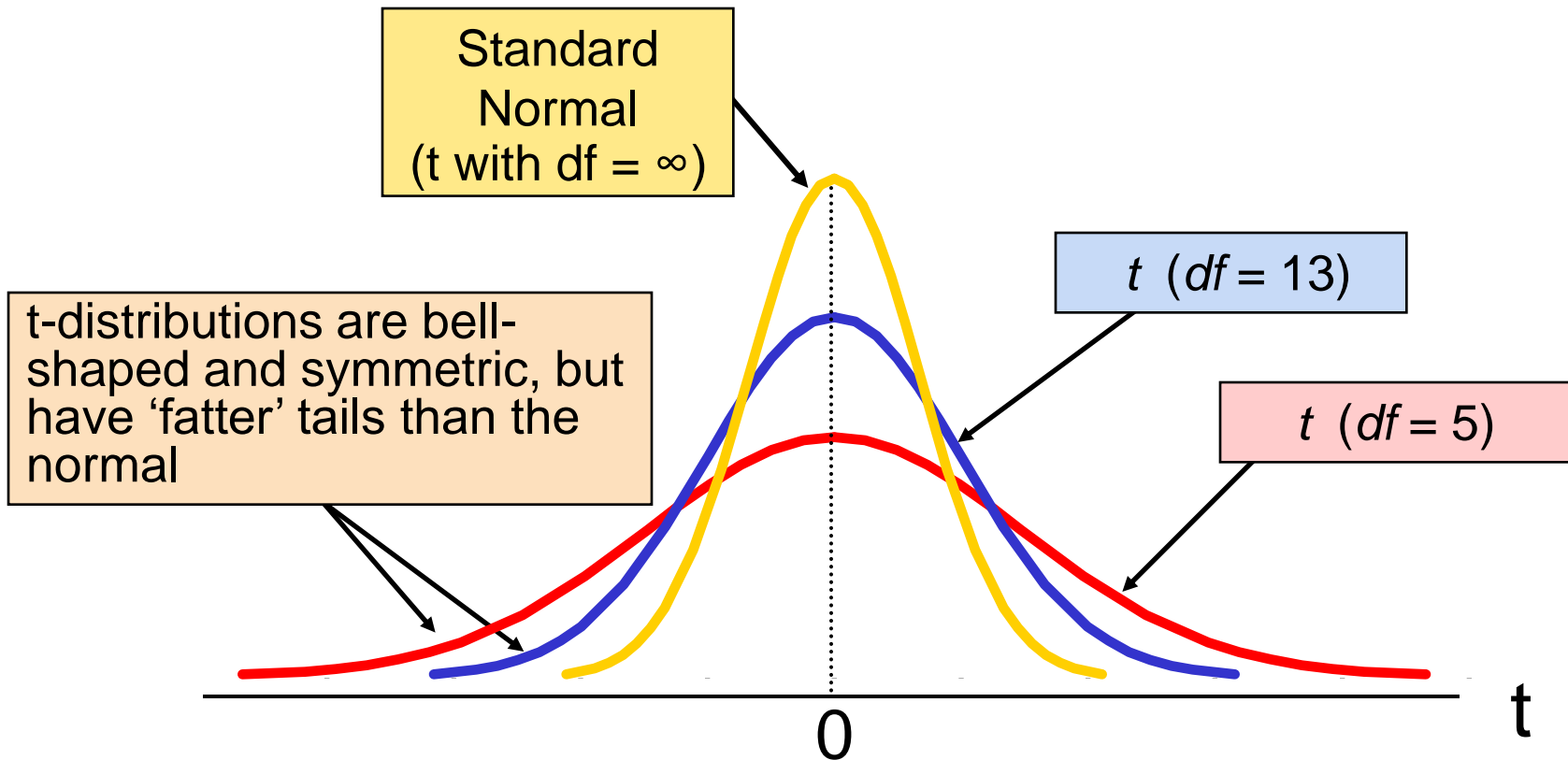
---

- The t is a family of distributions
- The t value depends on **degrees of freedom (d.f.)**
  - Number of observations that are free to vary after sample mean has been calculated

$$\text{d.f.} = n - 1$$

# Student's $t$ Distribution

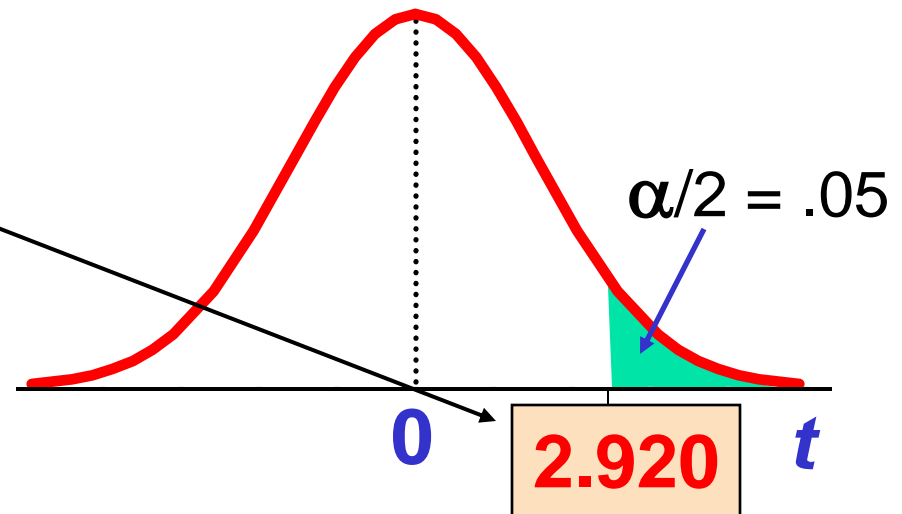
Note:  $t \rightarrow Z$  as  $n$  increases



# Student's t Table

Upper Tail Area			
df	.10	<b>.05</b>	.025
1	3.078	6.314	12.706
<b>2</b>	1.886	<b>2.920</b>	4.303
3	1.638	2.353	3.182

Let:  $n = 3$   
 $df = n - 1 = 2$   
 $\alpha = .10$   
 $\alpha/2 = .05$



The body of the table contains t values, not probabilities





# t distribution values

With comparison to the Z value

<b>Confidence Level</b>	<b>t (10 d.f.)</b>	<b>t (20 d.f.)</b>	<b>t (30 d.f.)</b>	<b>Z</b>
.80	1.372	1.325	1.310	1.282
.90	1.812	1.725	1.697	1.645
.95	2.228	2.086	2.042	1.960
.99	3.169	2.845	2.750	2.576

Note:  $t \rightarrow Z$  as  $n$  increases

# Confidence Interval Estimation for the Mean ( $\sigma^2$ Unknown)



---

- If the population standard deviation  $\sigma$  is unknown, we can **substitute the sample standard deviation,  $s$**
- This introduces extra uncertainty, since  $s$  is variable from sample to sample
- So we **use the  $t$  distribution** instead of the normal distribution

# Confidence Interval Estimation for the Mean ( $\sigma^2$ Unknown)

(continued)

- Assumptions
  - Population standard deviation is unknown
  - Population is normally distributed
  - If population is not normal, use large sample
- Use Student's t Distribution
- Confidence Interval Estimate:

$$\bar{X} \pm t_{n-1, \alpha/2} \frac{s}{\sqrt{n}}$$

where  $t_{n-1, \alpha/2}$  is the critical value of the t distribution with  $n-1$  d.f. and an area of  $\alpha/2$  in each tail:

$$P(t_{n-1} > t_{n-1, \alpha/2}) = \alpha/2$$

# Margin of Error

- The confidence interval,

$$\bar{x} \pm t_{n-1, \alpha/2} \frac{s}{\sqrt{n}}$$

- Can also be written as

$$\bar{x} \pm ME$$

where **ME** is called the **margin of error**:

$$ME = t_{n-1, \alpha/2} \frac{s}{\sqrt{n}}$$

# Example

A random sample of  $n = 25$  has  $\bar{x} = 50$  and  $s = 8$ . Form a 95% confidence interval for  $\mu$

■ d.f. =  $n - 1 = 24$ , so  $t_{n-1, \alpha/2} = t_{24, .025} = 2.0639$

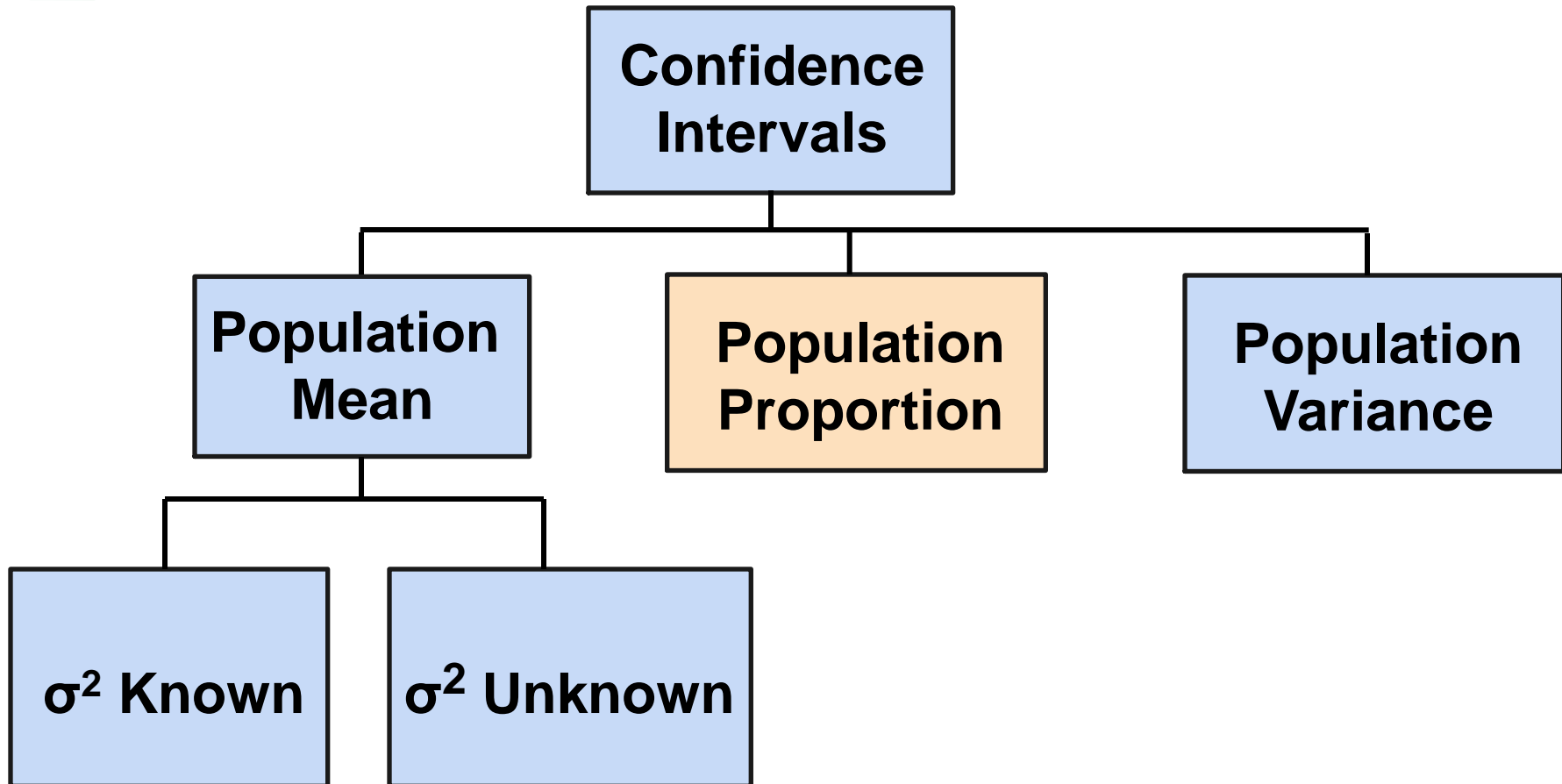
The confidence interval is

$$\bar{x} \pm t_{n-1, \alpha/2} \frac{s}{\sqrt{n}}$$

$$50 \pm (2.0639) \frac{8}{\sqrt{25}}$$

$$46.698 < \mu < 53.302$$

# Confidence Interval Estimation for Population Proportion



# Confidence Interval Estimation for Population Proportion



---

- An interval estimate for the population proportion (  $P$  ) can be calculated by adding an allowance for uncertainty to the sample proportion (  $\hat{p}$  )

# Confidence Intervals for the Population Proportion

- Recall that the distribution of the sample proportion is approximately normal if the sample size is large, with standard deviation

$$\sigma_P = \sqrt{\frac{P(1-P)}{n}}$$

- We will estimate this with sample data:

$$\sqrt{\frac{\hat{p}(1-\hat{p})}{n}}$$





# Confidence Interval Endpoints

---

- The confidence interval for the population proportion is given by

$$\hat{p} \pm z_{\alpha/2} \sqrt{\frac{\hat{p}(1-\hat{p})}{n}}$$

- where
  - $z_{\alpha/2}$  is the standard normal value for the level of confidence desired
  - $\hat{p}$  is the sample proportion
  - $n$  is the sample size
  - $nP(1-P) > 5$

# Example

---

- A random sample of 100 people shows that 25 are left-handed.
- Form a 95% confidence interval for the true proportion of left-handers



# Example

(continued)

- A random sample of 100 people shows that 25 are left-handed. Form a 95% confidence interval for the true proportion of left-handers.

$$\hat{p} \pm z_{\alpha/2} \sqrt{\frac{\hat{p}(1-\hat{p})}{n}}$$

$$\frac{25}{100} \pm 1.96 \sqrt{\frac{.25(.75)}{100}}$$

$$0.1651 < P < 0.3349$$



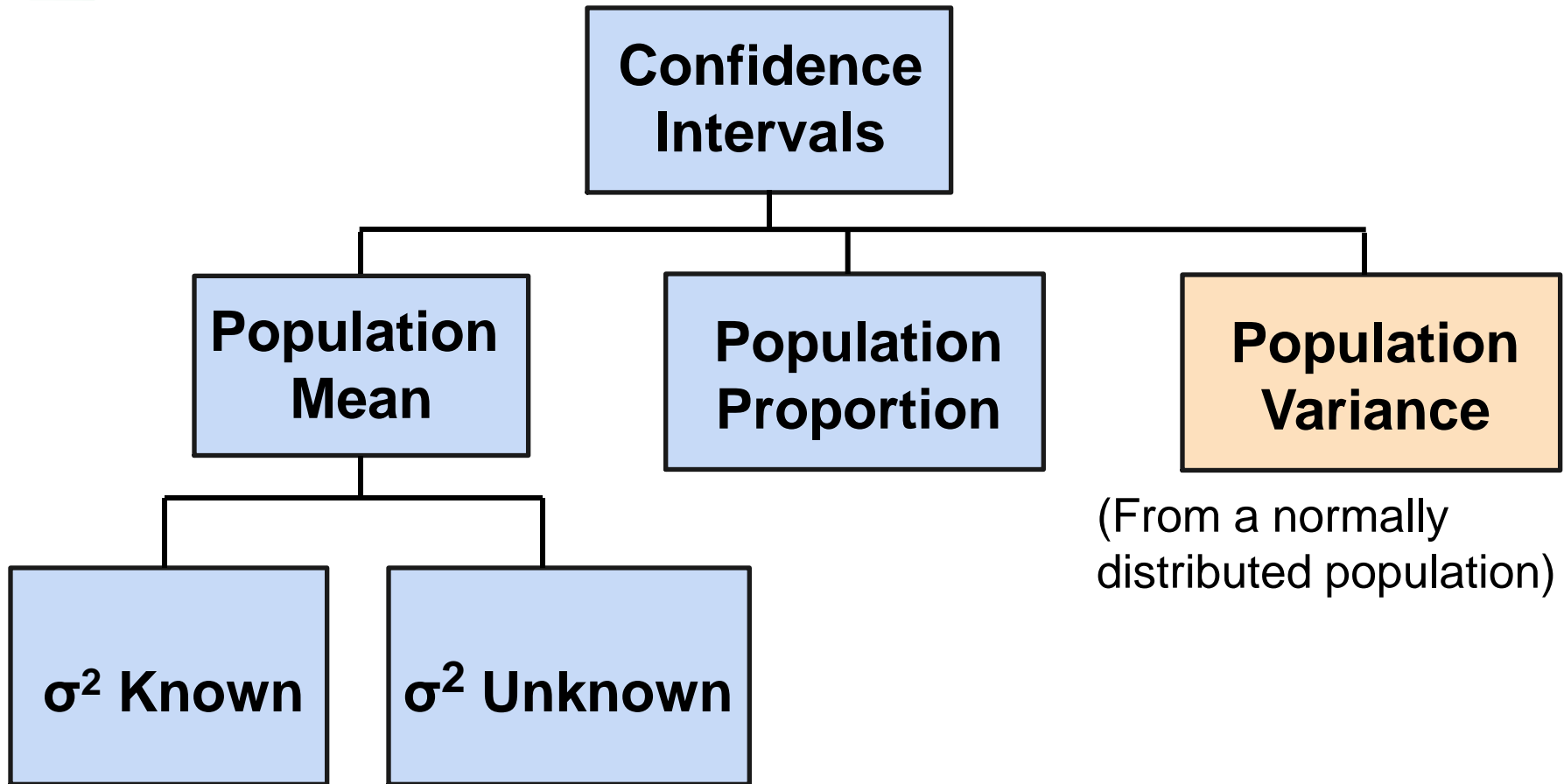
# Interpretation

- We are 95% confident that the true proportion of left-handers in the population is between 16.51% and 33.49%.
- Although the interval from 0.1651 to 0.3349 may or may not contain the true proportion, 95% of intervals formed from samples of size 100 in this manner will contain the true proportion.



# Confidence Interval Estimation for the Variance

7.5



# Confidence Intervals for the Population Variance



---

- **Goal:** Form a confidence interval for the population variance,  $\sigma^2$ 
  - The confidence interval is based on the sample variance,  $s^2$
  - Assumed: the population is normally distributed

# Confidence Intervals for the Population Variance

(continued)

The random variable

$$\chi_{n-1}^2 = \frac{(n-1)s^2}{\sigma^2}$$

follows a chi-square distribution with  $(n - 1)$  degrees of freedom

Where the chi-square value  $\chi_{n-1, \alpha}^2$  denotes the number for which

$$P(\chi_{n-1}^2 > \chi_{n-1, \alpha}^2) = \alpha$$

# Confidence Intervals for the Population Variance

*(continued)*

The  $100(1 - \alpha)\%$  confidence interval for the population variance is given by

$$\text{LCL} = \frac{(n-1)s^2}{\chi_{n-1, \alpha/2}^2}$$

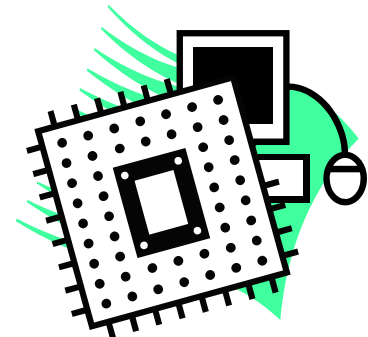
$$\text{UCL} = \frac{(n-1)s^2}{\chi_{n-1, 1-\alpha/2}^2}$$



# Example

You are testing the speed of a batch of computer processors. You collect the following data (in Mhz):

<b>Sample size</b>	<b>17</b>
<b>Sample mean</b>	<b>3004</b>
<b>Sample std dev</b>	<b>74</b>



Assume the population is normal.

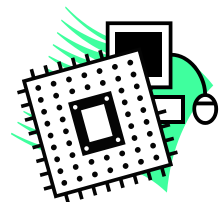
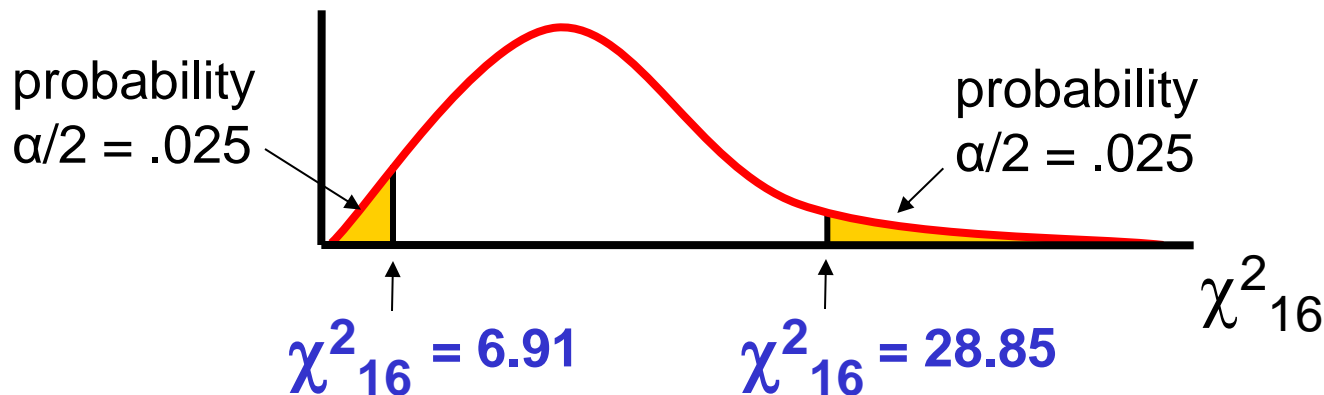
Determine the 95% confidence interval for  $\sigma_x^2$

# Finding the Chi-square Values

- $n = 17$  so the chi-square distribution has  $(n - 1) = 16$  degrees of freedom
- $\alpha = 0.05$ , so use the the chi-square values with area 0.025 in each tail:

$$\chi_{n-1, \alpha/2}^2 = \chi_{16, 0.025}^2 = 28.85$$

$$\chi_{n-1, 1-\alpha/2}^2 = \chi_{16, 0.975}^2 = 6.91$$



# Calculating the Confidence Limits

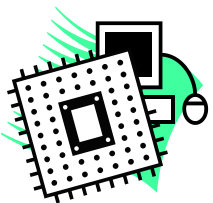
- The 95% confidence interval is

$$\frac{(n-1)s^2}{\chi_{n-1, \alpha/2}^2} < \sigma^2 < \frac{(n-1)s^2}{\chi_{n-1, 1-\alpha/2}^2}$$

$$\frac{(17-1)(74)^2}{28.85} < \sigma^2 < \frac{(17-1)(74)^2}{6.91}$$

$$3037 < \sigma^2 < 12680$$

Converting to standard deviation, we are 95% confident that the population standard deviation of CPU speed is between 55.1 and 112.6 Mhz



# Confidence Interval Estimation: Finite Populations

7.6

- If the sample size is more than 5% of the population size (and sampling is without replacement) then a **finite population correction factor** must be used when calculating the standard error

# Finite Population Correction Factor

- Suppose sampling is **without replacement** and the sample size is large relative to the population size
- Assume the population size is large enough to apply the central limit theorem
- Apply the **finite population correction factor** when estimating the population variance

$$\text{finite population correction factor} = \frac{N-n}{N-1}$$



# Estimating the Population Mean

---

- Let a simple random sample of size  $n$  be taken from a population of  $N$  members with mean  $\mu$
- The sample mean is an **unbiased estimator** of the population mean  $\mu$
- The **point estimate** is:

$$\bar{x} = \frac{1}{n} \sum_{i=1}^n x_i$$



# Finite Populations: Mean

---

- If the sample size is more than 5% of the population size, an unbiased estimator for the variance of the sample mean is

$$\hat{\sigma}_{\bar{x}}^2 = \frac{s^2}{n} \left( \frac{N-n}{N-1} \right)$$

- So the 100(1- $\alpha$ )% confidence interval for the population mean is

$$\bar{x} \pm t_{n-1, \alpha/2} \hat{\sigma}_{\bar{x}}$$



# Estimating the Population Total

---

- Consider a simple random sample of size  $n$  from a population of size  $N$
- The quantity to be estimated is the population total  $N\mu$
- An unbiased estimation procedure for the population total  $N\mu$  yields the point estimate  $N\bar{x}$





# Estimating the Population Total

---

- An unbiased estimator of the **variance** of the population total is

$$N^2 \hat{\sigma}_{\bar{x}}^2 = N^2 \frac{s^2}{n} \left( \frac{N-n}{N-1} \right)$$

- A  $100(1 - \alpha)\%$  **confidence interval** for the population total is

$$N\bar{x} \pm t_{n-1, \alpha/2} N\hat{\sigma}_{\bar{x}}$$



# Confidence Interval for Population Total: Example

---

A firm has a population of 1000 accounts and wishes to estimate the value of the **total population balance**

A sample of 80 accounts is selected with average balance of \$87.60 and standard deviation of \$22.30

Find the **95% confidence interval estimate of the total balance**



# Example Solution

$$N = 1000, \quad n = 80, \quad \bar{x} = 87.6, \quad s = 22.3$$

$$N^2 \hat{\sigma}_{\bar{x}}^2 = N^2 \frac{s^2}{n} \frac{(N-n)}{N-1} = (1000)^2 \frac{(22.3)^2}{80} \frac{920}{999} = 5724559.6$$

$$N \hat{\sigma}_{\bar{x}} = \sqrt{5724559.6} = 2392.6$$

$$N\bar{x} \pm t_{79,0.025} N \hat{\sigma}_{\bar{x}} = (1000)(87.6) \pm (1.9905)(2392.6)$$

$$82837.53 < N\mu < 92362.47$$

The 95% confidence interval for the population total balance is \$82,837.53 to \$92,362.47

# Estimating the Population Proportion: Finite Population

- Let the true population proportion be  $P$
- Let  $\hat{p}$  be the sample proportion from  $n$  observations from a simple random sample
- The sample proportion,  $\hat{p}$ , is an unbiased estimator of the population proportion,  $P$

# Confidence Intervals for Population Proportion: Finite Population

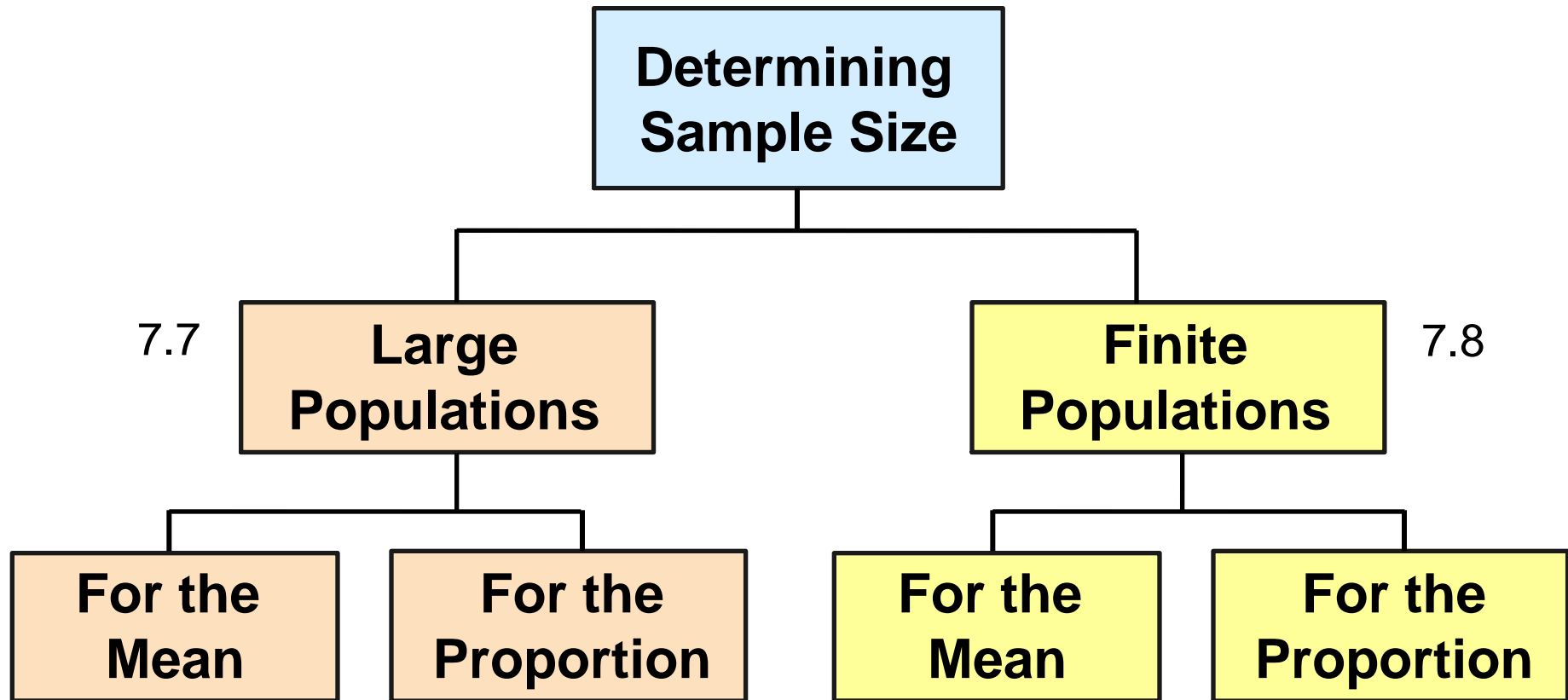
- If the sample size is more than 5% of the population size, an unbiased estimator for the variance of the population proportion is

$$\hat{\sigma}_{\hat{p}}^2 = \frac{\hat{p}(1-\hat{p})}{n} \left( \frac{N-n}{N-1} \right)$$

- So the  $100(1-\alpha)\%$  confidence interval for the population proportion is

$$\hat{p} \pm z_{\alpha/2} \hat{\sigma}_{\hat{p}}$$

# Sample-Size Determination



# Sample-Size Determination: Large Populations

Large  
Populations

For the  
Mean

(Known population  
variance)

Margin of Error  
(sampling error)

$$\bar{X} \pm z_{\alpha/2} \frac{\sigma}{\sqrt{n}}$$

$$ME = z_{\alpha/2} \frac{\sigma}{\sqrt{n}}$$

# Sample-Size Determination: Large Populations

(continued)

Large  
Populations

For the  
Mean

(Known population  
variance)

$$ME = z_{\alpha/2} \frac{\sigma}{\sqrt{n}}$$

Now solve  
for n to get

$$n = \frac{z_{\alpha/2}^2 \sigma^2}{ME^2}$$





# Sample-Size Determination

---

*(continued)*

- To determine the required sample size for the mean, you must know:
  - The desired level of confidence  $(1 - \alpha)$ , which determines the  $z_{\alpha/2}$  value
  - The acceptable margin of error (sampling error), ME
  - The population standard deviation,  $\sigma$



# Required Sample Size Example

If  $\sigma = 45$ , what sample size is needed to estimate the mean within  $\pm 5$  with 90% confidence?

$$n = \frac{z_{\alpha/2}^2 \sigma^2}{ME^2} = \frac{(1.645)^2 (45)^2}{5^2} = 219.19$$

So the required sample size is  **$n = 220$**

(Always round up)

# Sample Size Determination: Population Proportion

Large  
Populations

For the  
Proportion

$$\hat{p} \pm z_{\alpha/2} \sqrt{\frac{\hat{p}(1-\hat{p})}{n}}$$

$$ME = z_{\alpha/2} \sqrt{\frac{\hat{p}(1-\hat{p})}{n}}$$

Margin of Error  
(sampling error)

# Sample Size Determination: Population Proportion

(continued)

Large  
Populations

For the  
Proportion

$$ME = z_{\alpha/2} \sqrt{\frac{\hat{p}(1-\hat{p})}{n}}$$

$\hat{p}(1-\hat{p})$  cannot  
be larger than  
0.25, when  $\hat{p} =$   
0.5

Substitute  
0.25 for  $\hat{p}(1-\hat{p})$   
and solve for  
n to get

$$n = \frac{0.25 z_{\alpha/2}^2}{ME^2}$$

# Sample Size Determination: Population Proportion

*(continued)*

- The sample and population proportions,  $\hat{p}$  and  $P$ , are generally not known (since no sample has been taken yet)
- $P(1 - P) = 0.25$  generates the largest possible margin of error (so guarantees that the resulting sample size will meet the desired level of confidence)
- To determine the required sample size for the proportion, you must know:
  - The desired level of confidence ( $1 - \alpha$ ), which determines the critical  $z_{\alpha/2}$  value
  - The acceptable sampling error (margin of error), ME
  - Estimate  $P(1 - P) = 0.25$

# Required Sample Size Example: Population Proportion



---

How large a sample would be necessary to estimate the true proportion defective in a large population **within  $\pm 3\%$ , with 95% confidence?**

# Required Sample Size Example

(continued)

Solution:

For 95% confidence, use  $z_{0.025} = 1.96$

ME = 0.03

Estimate  $P(1 - P) = 0.25$

$$n = \frac{0.25 z_{\alpha/2}^2}{ME^2} = \frac{(0.25)(1.96)^2}{(0.03)^2} = 1067.11$$

So use  $n = 1068$

# Sample-Size Determination: Finite Populations

7.8

## Finite Populations

### For the Mean

A finite population correction factor is added:

$$\text{Var}(\bar{X}) = \frac{\sigma^2}{n} \left( \frac{N-n}{N-1} \right)$$

1. Calculate the required sample size  $n_0$  using the prior formula:

$$n_0 = \frac{z_{\alpha/2}^2 \sigma^2}{ME^2}$$

2. Then adjust for the finite population:

$$n = \frac{n_0 N}{n_0 + (N-1)}$$



# Sample-Size Determination: Finite Populations

**Finite  
Populations**

**For the  
Proportion**

A finite population  
correction factor is added:

$$\text{Var}(\hat{p}) = \frac{P(1-P)}{n} \left( \frac{N-n}{N-1} \right)$$

1. Solve for n:

$$n = \frac{NP(1-P)}{(N-1)\sigma_{\hat{p}}^2 + P(1-P)}$$

2. The largest possible value  
for this expression  
(if  $P = 0.25$ ) is:

$$n = \frac{0.25(1-P)}{(N-1)\sigma_{\hat{p}}^2 + 0.25}$$

3. A 95% confidence interval  
will extend  $\pm 1.96 \sigma_{\hat{p}}$  from  
the sample proportion



# Example: Sample Size to Estimate Population Proportion

---

How large a sample would be necessary to estimate **within  $\pm 5\%$**  the true proportion of college graduates in a population of 850 people **with 95% confidence?**

# Required Sample Size Example

(continued)

Solution:

- For 95% confidence, use  $z_{0.025} = 1.96$
- $ME = 0.05$

$$1.96 \sigma_{\hat{p}} = 0.05 \Rightarrow \sigma_{\hat{p}} = 0.02551$$

$$n_{\max} = \frac{0.25N}{(N-1)\sigma_{\hat{p}}^2 + 0.25} = \frac{(0.25)(850)}{(849)(0.02551)^2 + 0.25} = 264.8$$

So use  $n = 265$



# Chapter Summary

---

- Introduced the concept of confidence intervals
- Discussed point estimates
- Developed confidence interval estimates
- Created confidence interval estimates for the mean ( $\sigma^2$  known)
- Introduced the Student's t distribution
- Determined confidence interval estimates for the mean ( $\sigma^2$  unknown)




# Chapter Summary


---

*(continued)*

- Created confidence interval estimates for the proportion
- Created confidence interval estimates for the variance of a normal population
- Applied the finite population correction factor to form confidence intervals when the sample size is not small relative to the population size
- Determined required sample size to meet confidence and margin of error requirements



---



**This work is protected by United States copyright laws and is provided solely for the use of instructors in teaching their courses and assessing student learning. Dissemination or sale of any part of this work (including on the World Wide Web) will destroy the integrity of the work and is not permitted. The work and materials from it should never be made available to students except by instructors using the accompanying text in their classes. All recipients of this work are expected to abide by these restrictions and to honor the intended pedagogical purposes and the needs of other instructors who rely on these materials.**

All rights reserved. No part of this publication may be reproduced, stored in a retrieval system, or transmitted, in any form or by any means, electronic, mechanical, photocopying, recording, or otherwise, without the prior written permission of the publisher.

Printed in the United States of America.