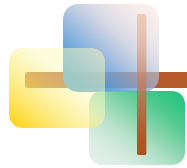


# Statistics for Business and Economics

8<sup>th</sup> Edition



## Chapter 1

### Describing Data: Graphical



# Chapter Goals

---

**After completing this chapter, you should be able to:**

- Explain how decisions are often based on incomplete information
- Explain key definitions:
  - ◆ Population vs. Sample
  - ◆ Parameter vs. Statistic
  - ◆ Descriptive vs. Inferential Statistics
- Describe random sampling and systematic sampling
- Explain the difference between Descriptive and Inferential statistics
- Identify types of data and levels of measurement



# Chapter Goals

---

*(continued)*

**After completing this chapter, you should be able to:**

- Create and interpret graphs to describe categorical variables:
  - frequency distribution, bar chart, pie chart, Pareto diagram
- Create a line chart to describe time-series data
- Create and interpret graphs to describe numerical variables:
  - frequency distribution, histogram, ogive, stem-and-leaf display
- Construct and interpret graphs to describe relationships between variables:
  - Scatter plot, cross table
- Describe appropriate and inappropriate ways to display data graphically

# Decision Making in an Uncertain Environment

1.1

**Everyday decisions are based on incomplete information**

**Examples:**

- Will the job market be strong when I graduate?
- Will the price of Yahoo stock be higher in six months than it is now?
- Will interest rates remain low for the rest of the year if the federal budget deficit is as high as predicted?

# Decision Making in an Uncertain Environment

*(continued)*

## Data are used to assist decision making

- **Statistics** is a tool to help process, summarize, analyze, and interpret data



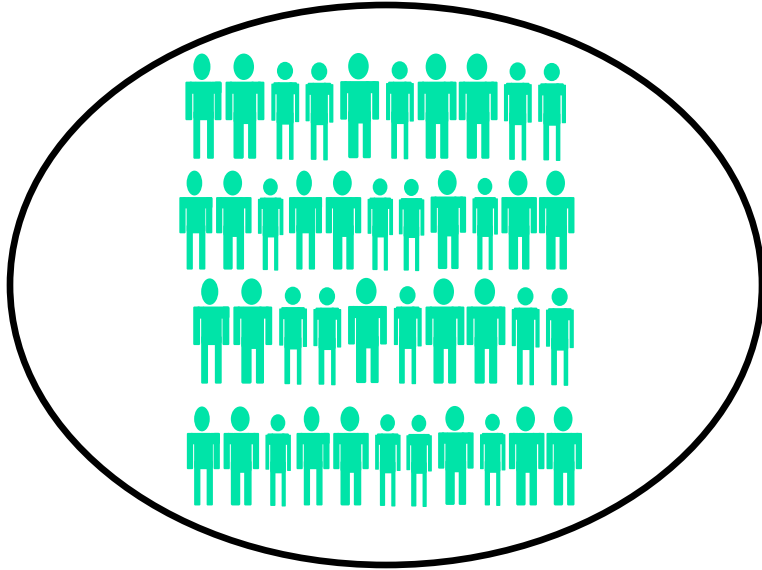
# Key Definitions

---

- A **population** is the collection of all items of interest or under investigation
  - $N$  represents the population size
- A **sample** is an observed subset of the population
  - $n$  represents the sample size
- A **parameter** is a specific characteristic of a population
- A **statistic** is a specific characteristic of a sample

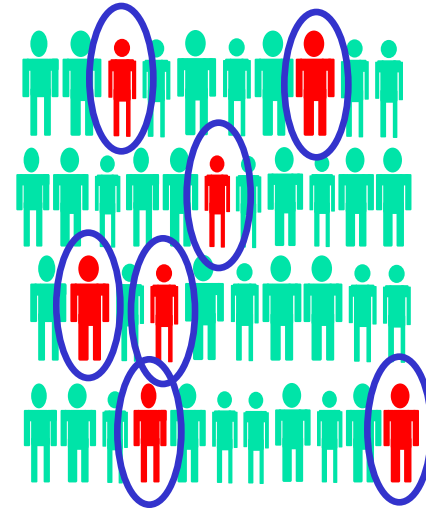
# Population vs. Sample

## Population



Values calculated using population data are called **parameters**

## Sample



Values computed from sample data are called **statistics**



# Examples of Populations

---

- Names of all registered voters in the United States
- Incomes of all families living in Daytona Beach
- Annual returns of all stocks traded on the New York Stock Exchange
- Grade point averages of all the students in your university





# Random Sampling

---

**Simple random sampling** is a procedure in which

- each member of the population is chosen strictly by chance,
- each member of the population is equally likely to be chosen,
- every possible sample of  $n$  objects is equally likely to be chosen

The resulting sample is called a **random sample**



# Systematic Sampling

---

For **systematic sampling**,

- Assure that the population is arranged in a way that is not related to the subject of interest
- Select every  $j^{\text{th}}$  item from the population...
- ...where  $j$  is the ratio of the population size to the sample size,  $j = N/n$
- Randomly select a number from 1 to  $j$  for the first item selected

The resulting sample is called a **systematic sample**



# Systematic Sampling

*(continued)*

## Example:

Suppose you wish to sample  $n = 9$  items from a population of  $N = 72$ .

$$j = N / n = 72 / 9 = 8$$

Randomly select a number from 1 to 8 for the first item to include in the sample; suppose this is item number 3.

Then select every 8<sup>th</sup> item thereafter

(items 3, 11, 19, 27, 35, 43, 51, 59, 67)



# Descriptive and Inferential Statistics

---

Two branches of statistics:

- **Descriptive statistics**

- Graphical and numerical procedures to summarize and process data

- **Inferential statistics**

- Using data to make predictions, forecasts, and estimates to assist decision making

# Descriptive Statistics

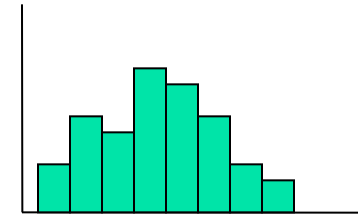
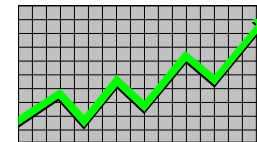
- Collect data

- e.g., Survey



- Present data

- e.g., Tables and graphs



- Summarize data

- e.g., Sample mean =  $\frac{\sum X_i}{n}$

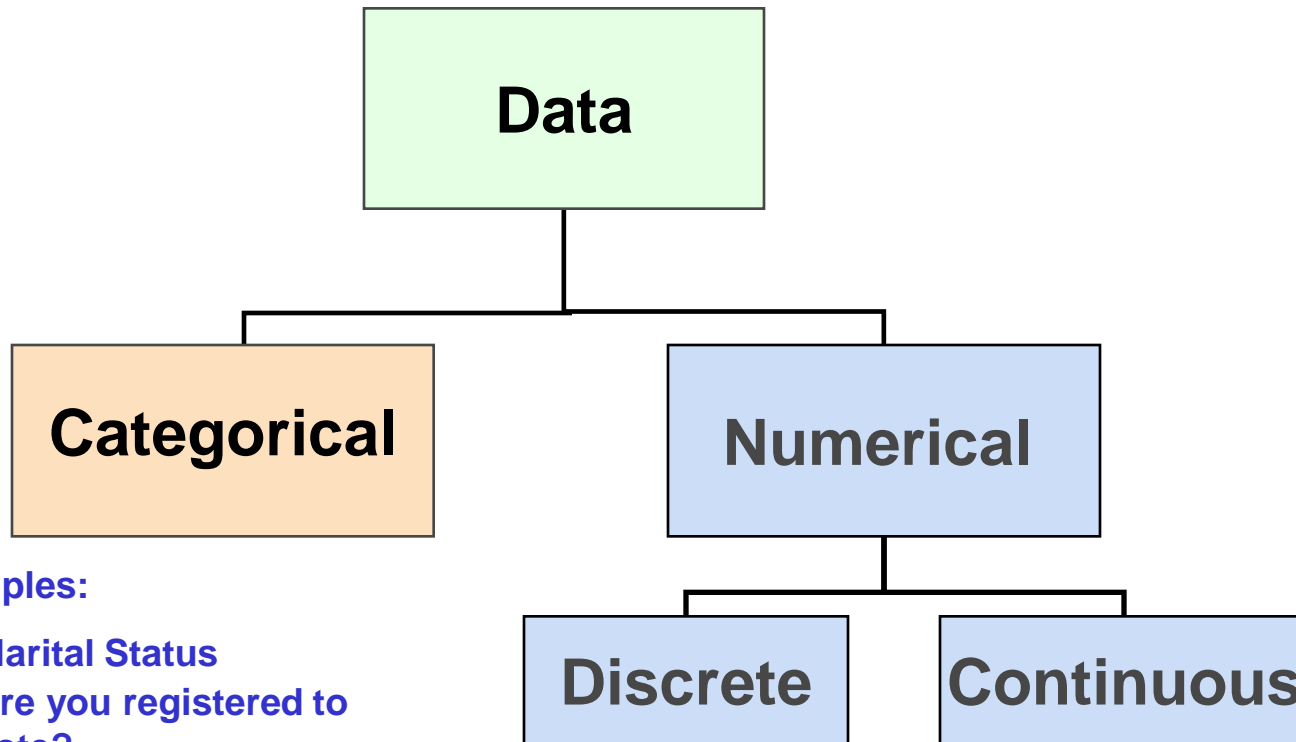
# Inferential Statistics

- Estimation
  - e.g., Estimate the population mean weight using the sample mean weight
- Hypothesis testing
  - e.g., Test the claim that the population mean weight is 140 pounds



**Inference is the process of drawing conclusions or making decisions about a population based on sample results**

# Classification of Variables



## Examples:

- **Marital Status**
  - **Are you registered to vote?**
  - **Eye Color**
- (Defined categories or groups)**

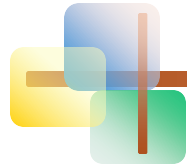
## Examples:

- **Number of Children**
  - **Defects per hour**
- (Counted items)**

## Examples:

- **Weight**
  - **Voltage**
- (Measured characteristics)**

# Measurement Levels



Differences between measurements, true zero exists

**Ratio Data**

Quantitative Data

Differences between measurements but no true zero

**Interval Data**

Ordered Categories (rankings, order, or scaling)

**Ordinal Data**

Qualitative Data

Categories (no ordering or direction)

**Nominal Data**



# Graphical Presentation of Data

---

1.3-  
1.5

- Data in **raw form** are usually not easy to use for decision making
- Some type of organization is needed
  - Table
  - Graph
- The type of graph to use depends on the variable being summarized

# Graphical Presentation of Data

*(continued)*

- Techniques reviewed in this chapter:

## Categorical Variables

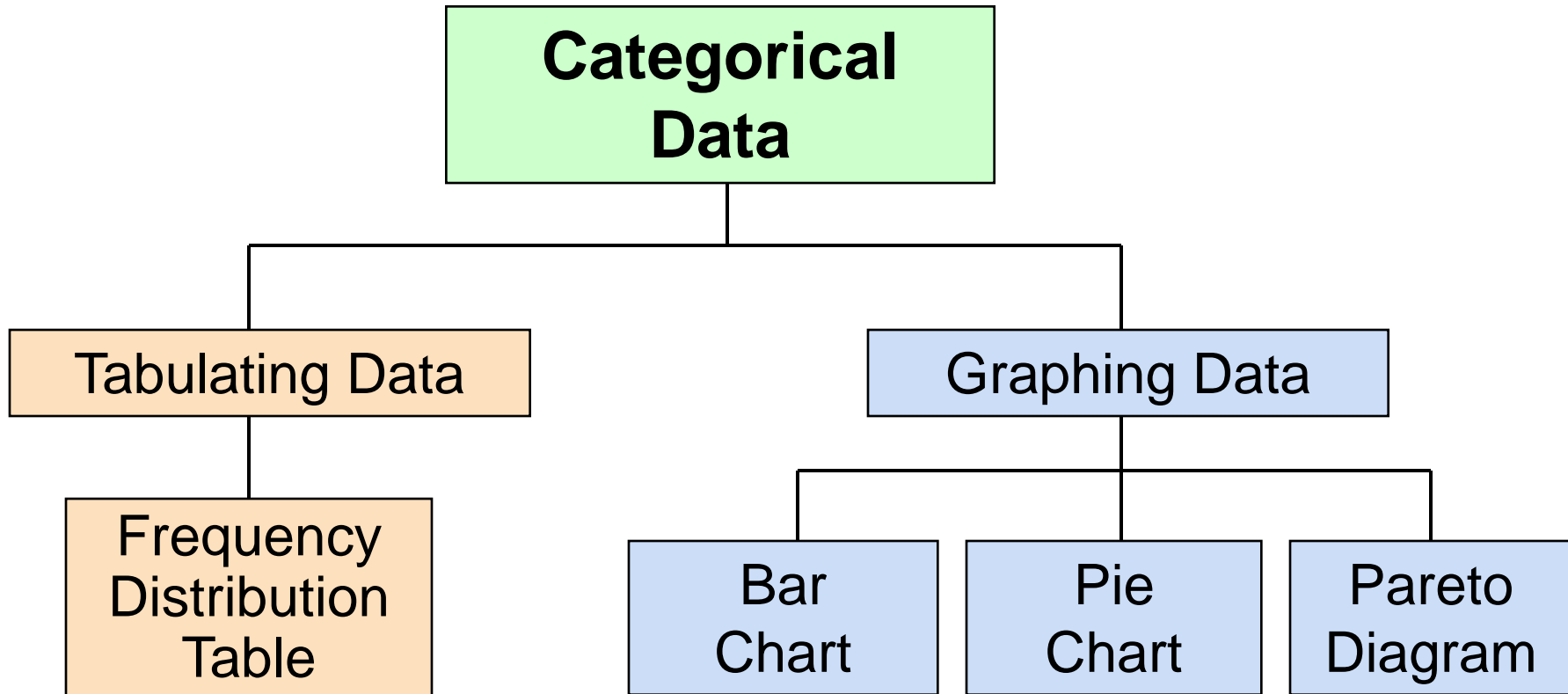
- Frequency distribution
- Cross table
- Bar chart
- Pie chart
- Pareto diagram

## Numerical Variables

- Line chart
- Frequency distribution
- Histogram and ogive
- Stem-and-leaf display
- Scatter plot

# Tables and Graphs for Categorical Variables

1.3



# The Frequency Distribution Table

**Summarize data by category**

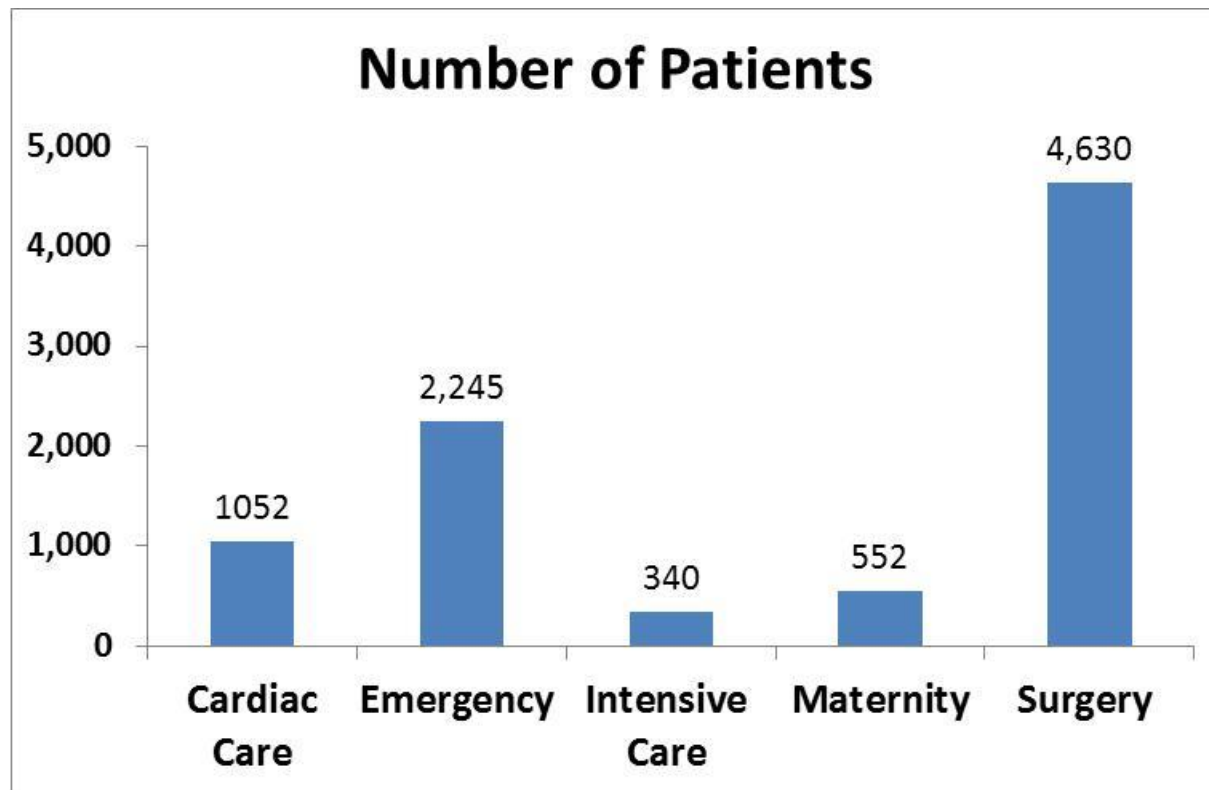
**Example: Hospital Patients by Unit**

<b>Hospital Unit</b>	<b>Number of Patients</b>	<b>Percent (rounded)</b>
Cardiac Care	1,052	11.93
Emergency	2,245	25.46
Intensive Care	340	3.86
Maternity	552	6.26
Surgery	<u>4,630</u>	<u>52.50</u>
Total:	8,819	100.0

(Variables are  
categorical)

# Graph of Frequency Distribution

- Bar chart of patient data





# Cross Tables

---

- **Cross Tables** (or contingency tables) list the number of observations for every combination of values for two categorical or ordinal variables
- If there are  $r$  categories for the first variable (rows) and  $c$  categories for the second variable (columns), the table is called an  $r \times c$  cross table



# Cross Table Example

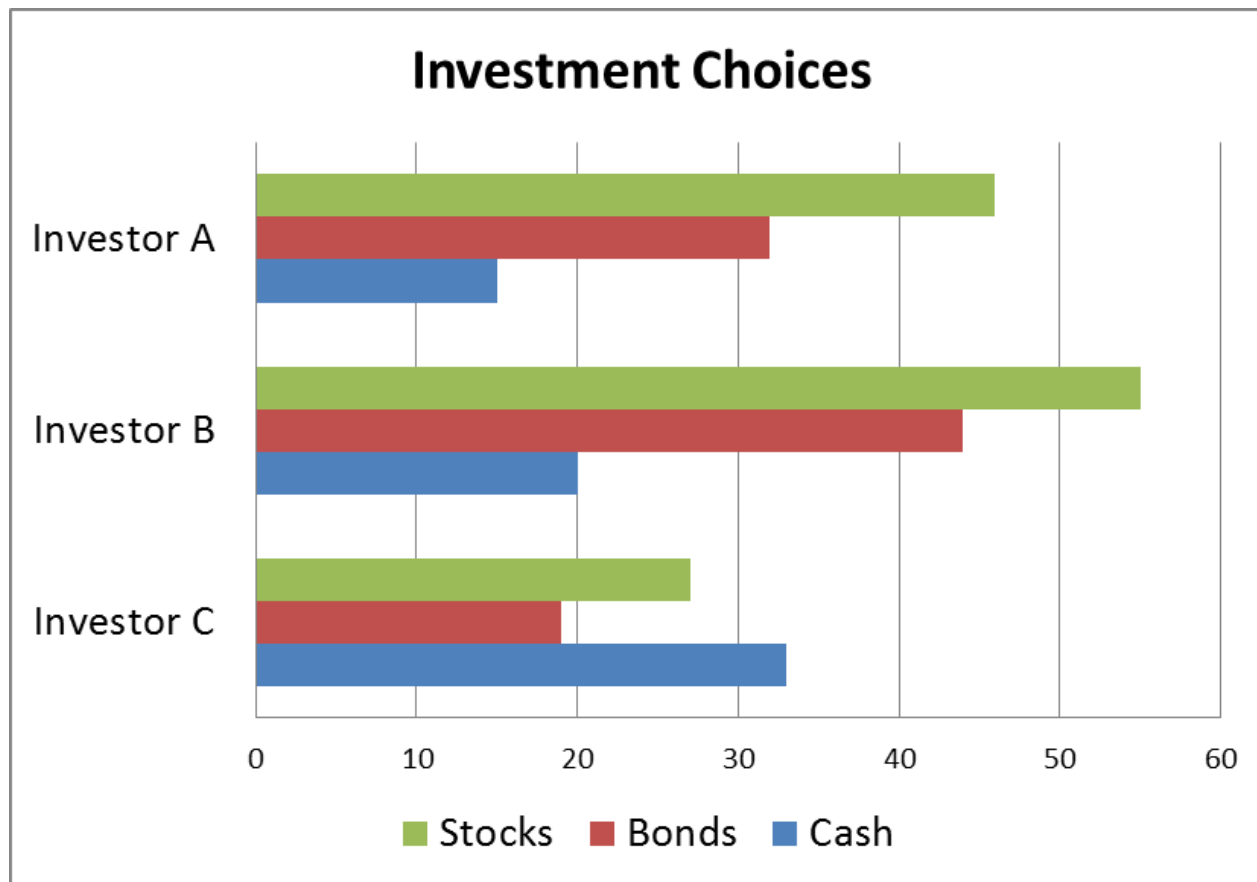
- **3 x 3 Cross Table** for Investment Choices by Investor  
(values in \$1000's)

<b>Investment Category</b>	<b>Investor A</b>	<b>Investor B</b>	<b>Investor C</b>	<b>Total</b>
Stocks	46	55	27	<b>128</b>
Bonds	32	44	19	<b>95</b>
Cash	15	20	33	<b>68</b>
<b>Total</b>	<b>93</b>	<b>119</b>	<b>79</b>	<b>291</b>

# Graphing Multivariate Categorical Data

*(continued)*

- Side by side horizontal bar chart

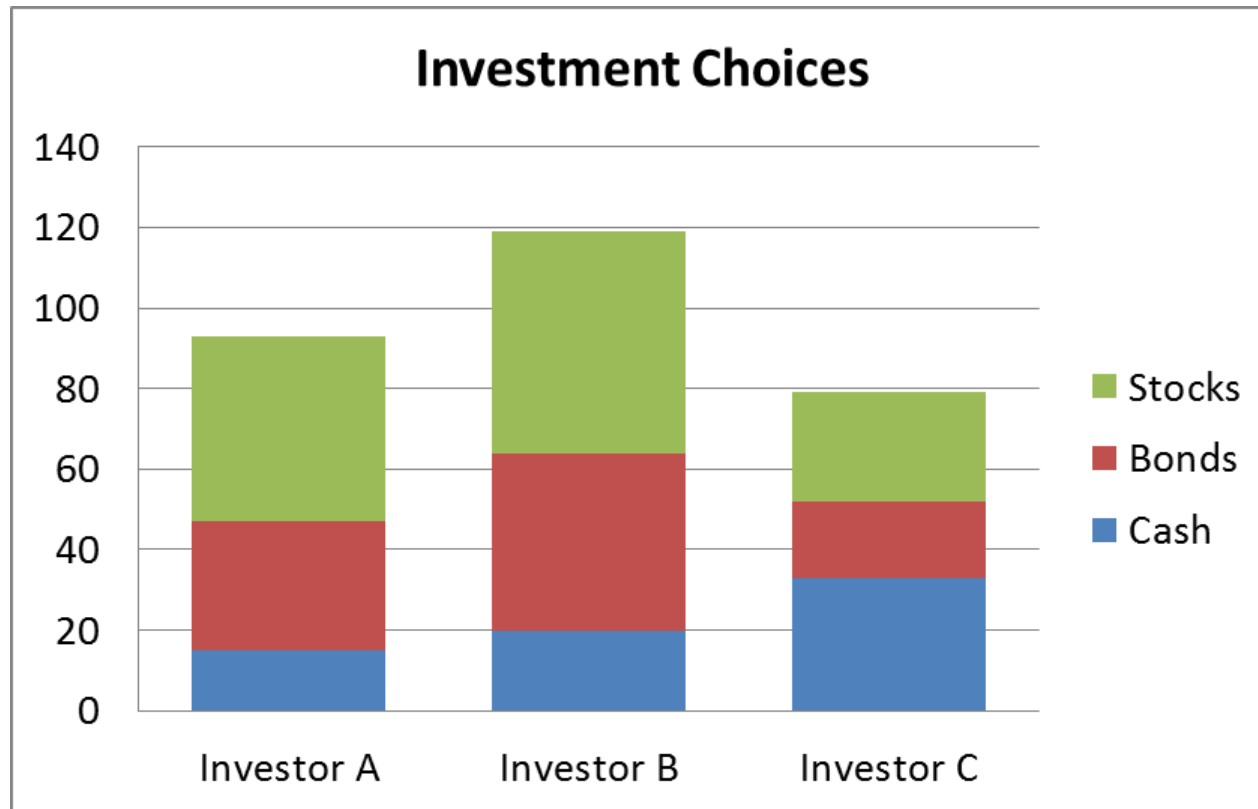




# Graphing Multivariate Categorical Data

*(continued)*

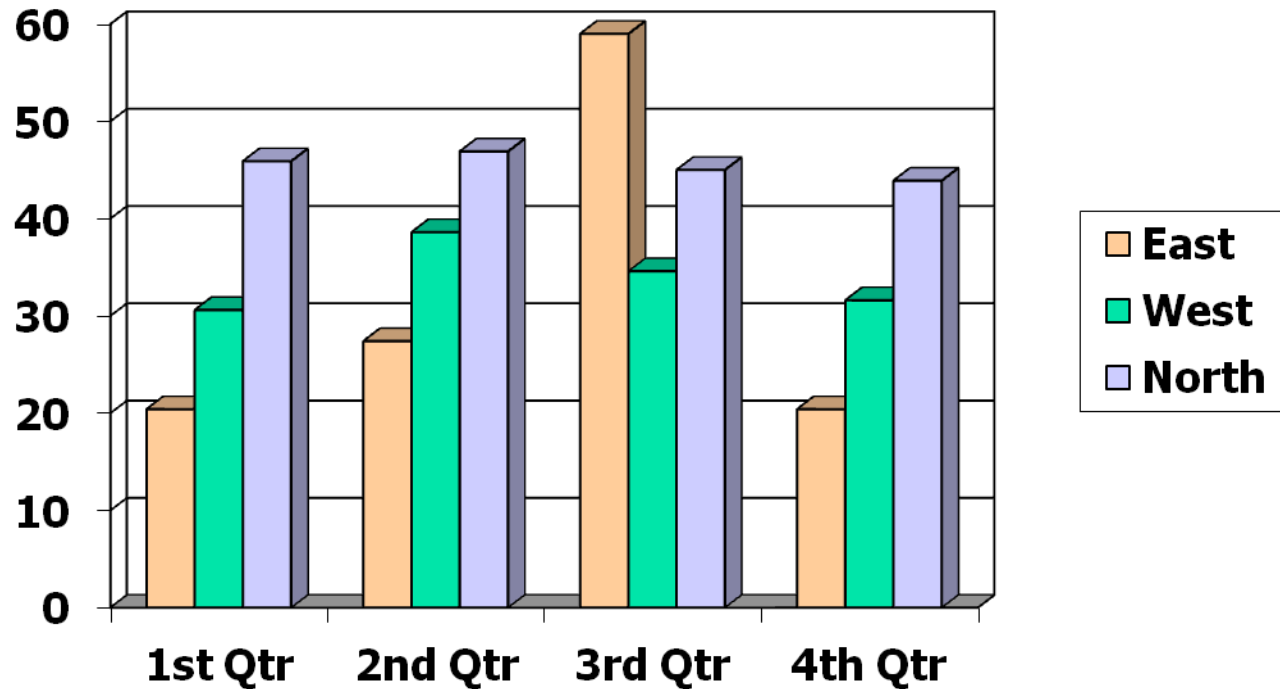
- **Stacked bar chart**



# Vertical Side-by-Side Chart Example

- Sales by quarter for three sales territories:

	1st Qtr	2nd Qtr	3rd Qtr	4th Qtr
East	20.4	27.4	59	20.4
West	30.6	38.6	34.6	31.6
North	45.9	46.9	45	43.9





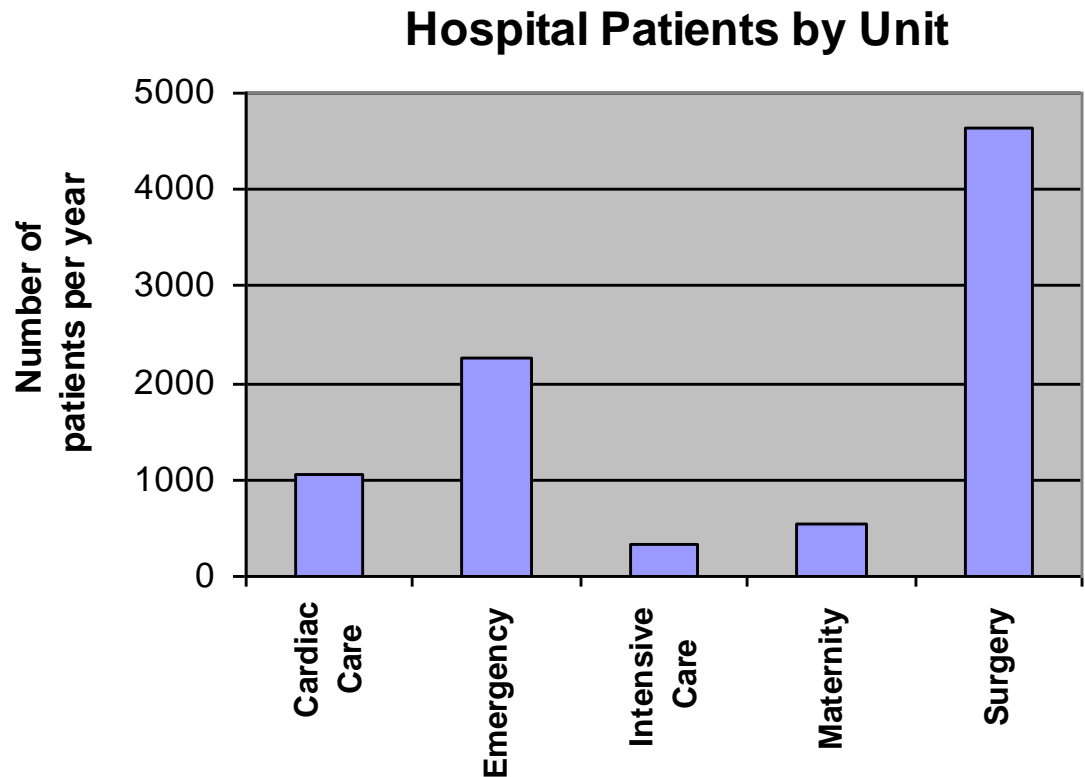
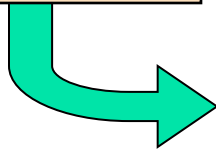
# Bar and Pie Charts

---

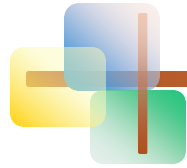
- **Bar charts** and **Pie charts** are often used for qualitative (categorical) data
- Height of bar or size of pie slice shows the frequency or percentage for each category

# Bar Chart Example

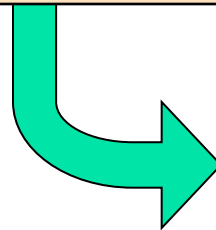
Hospital Unit	Number of Patients
Cardiac Care	1,052
Emergency	2,245
Intensive Care	340
Maternity	552
Surgery	4,630



# Pie Chart Example

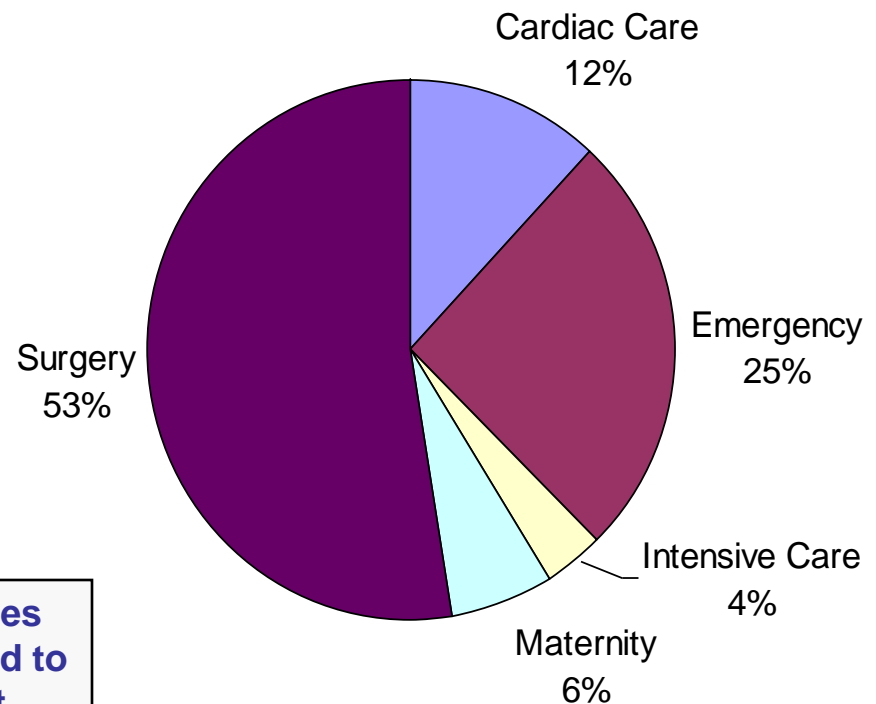


Hospital Unit	Number of Patients	% of Total
Cardiac Care	1,052	11.93
Emergency	2,245	25.46
Intensive Care	340	3.86
Maternity	552	6.26
Surgery	4,630	52.50



**(Percentages are rounded to the nearest percent)**

Hospital Patients by Unit





# Pareto Diagram

---

- Used to portray categorical data
- A bar chart, where categories are shown in descending order of frequency
- A cumulative polygon is often shown in the same graph
- Used to separate the “vital few” from the “trivial many”



# Pareto Diagram Example

---

**Example:** 400 defective items are examined for cause of defect:

Source of Manufacturing Error	Number of defects
Bad Weld	34
Poor Alignment	223
Missing Part	25
Paint Flaw	78
Electrical Short	19
Cracked case	21
<b>Total</b>	<b>400</b>



# Pareto Diagram Example

*(continued)*

**Step 1:** Sort by defect cause, in descending order

**Step 2:** Determine % in each category

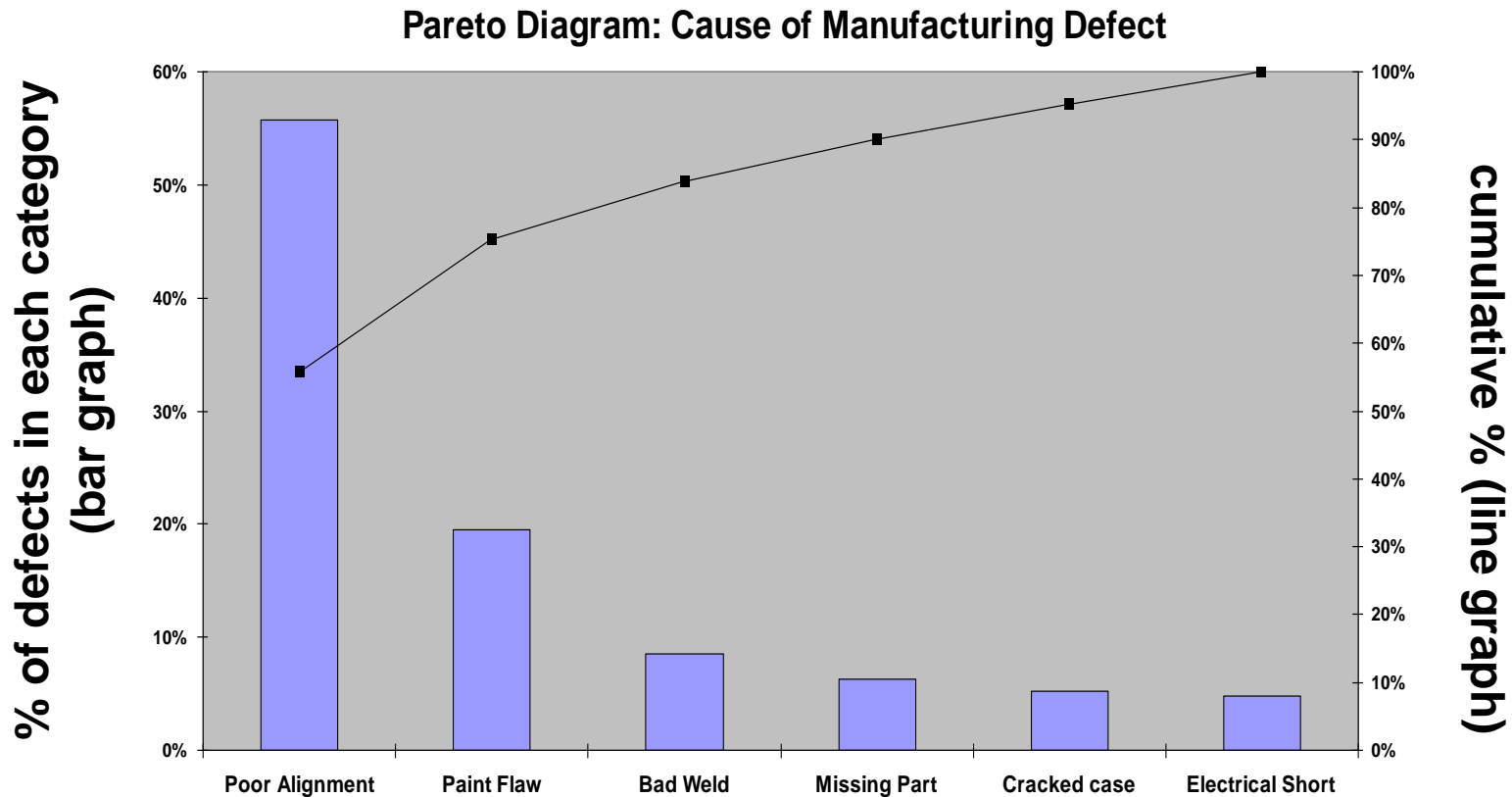
Source of Manufacturing Error	Number of defects	% of Total Defects
Poor Alignment	223	55.75
Paint Flaw	78	19.50
Bad Weld	34	8.50
Missing Part	25	6.25
Cracked case	21	5.25
Electrical Short	19	4.75
<b>Total</b>	<b>400</b>	<b>100%</b>



# Pareto Diagram Example

(continued)

## Step 3: Show results graphically



# Graphs to Describe Time-Series Data

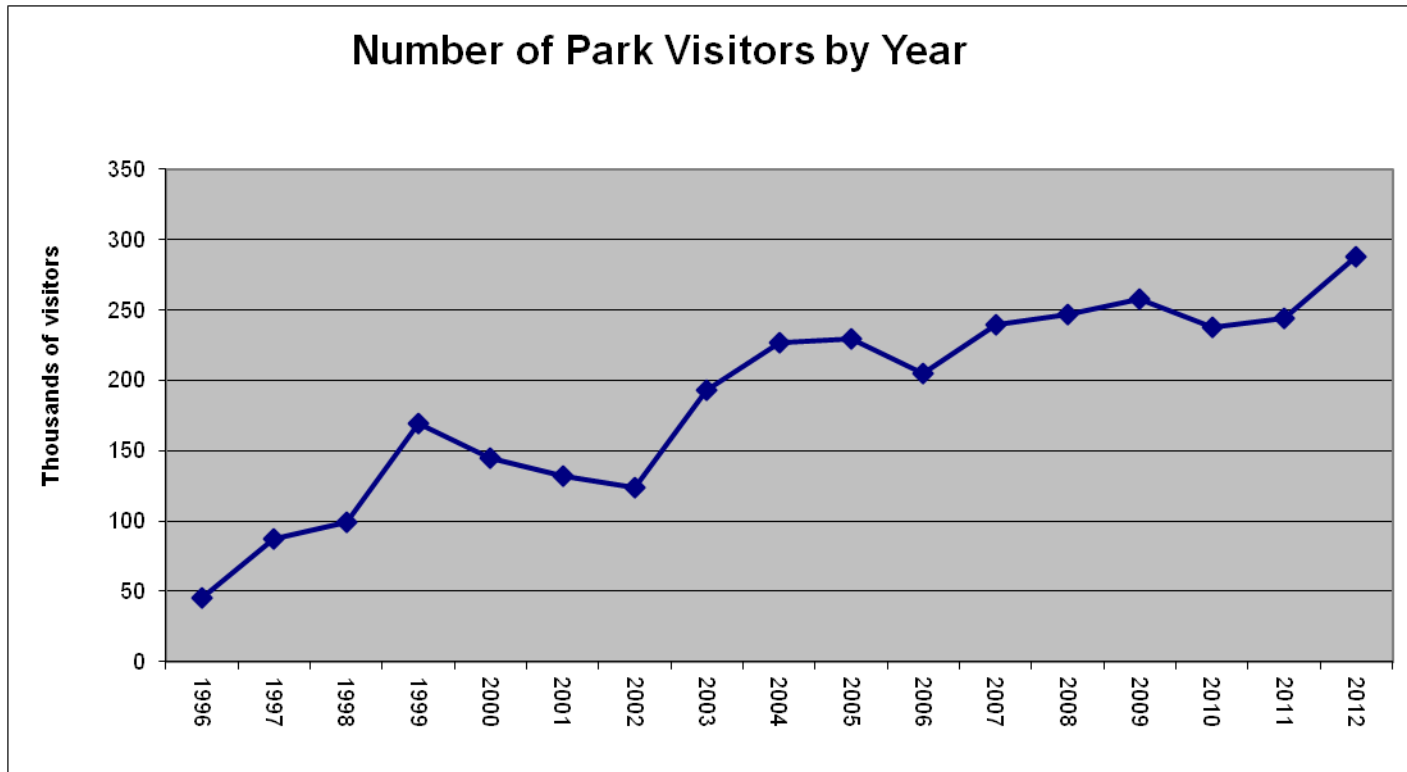
---

1.4



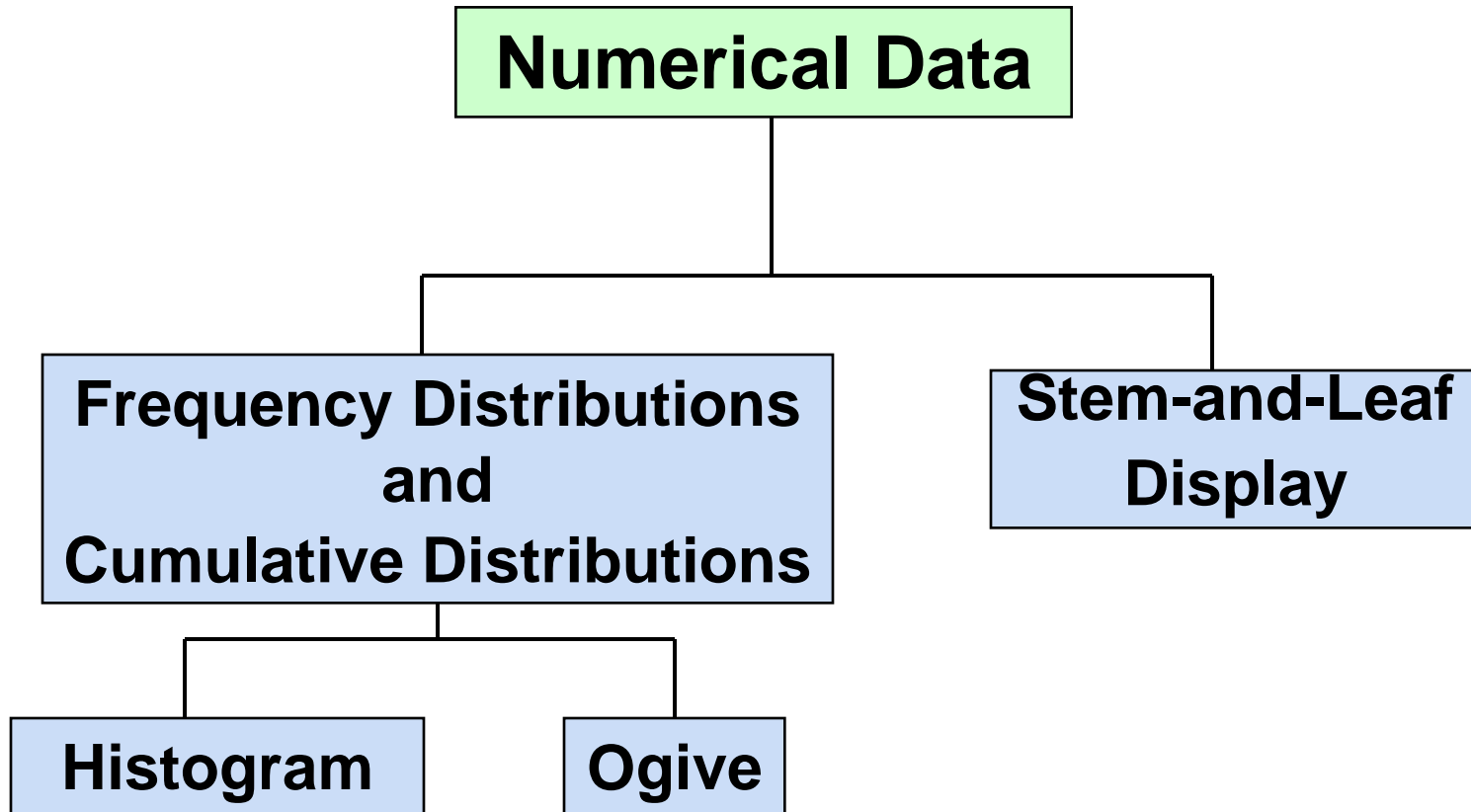
- A **line chart** (time-series plot) is used to show the values of a variable over time
- Time is measured on the horizontal axis
- The variable of interest is measured on the vertical axis

# Line Chart Example



# Graphs to Describe Numerical Variables

1.5





# Frequency Distributions

---

## What is a Frequency Distribution?

- A frequency distribution is a **list or a table** ...
- containing **class groupings** (categories or ranges within which the data fall) ...
- and the **corresponding frequencies** with which data fall within each class or category



# Why Use Frequency Distributions?

---

- A frequency distribution is a way to summarize data
- The distribution condenses the raw data into a more useful form...
- and allows for a quick visual interpretation of the data

# Class Intervals and Class Boundaries

- Each class grouping has the same width
- Determine the width of each interval by

$$w = \text{interval width} = \frac{\text{largest number} - \text{smallest number}}{\text{number of desired intervals}}$$

- Use at least 5 but no more than 15-20 intervals
- Intervals never overlap
- Round up the interval width to get desirable interval endpoints



# Frequency Distribution Example

---

**Example:** A manufacturer of insulation randomly selects 20 winter days and records the **daily high temperature**

data:

**24, 35, 17, 21, 24, 37, 26, 46, 58, 30,  
32, 13, 12, 38, 41, 43, 44, 27, 53, 27**





# Frequency Distribution Example

*(continued)*

- Sort raw data in ascending order:

12, 13, 17, 21, 24, 24, 26, 27, 27, 30, 32, 35, 37, 38, 41, 43, 44, 46, 53, 58

- Find range: **58 - 12 = 46**
- Select number of classes: **5 (usually between 5 and 15)**
- Compute interval width: **10 (46/5 then round up)**
- Determine interval boundaries: **10 but less than 20, 20 but less than 30, . . . , 60 but less than 70**
- Count observations & assign to classes



# Frequency Distribution Example

*(continued)*

**Data in ordered array:**

**12, 13, 17, 21, 24, 24, 26, 27, 27, 30, 32, 35, 37, 38, 41, 43, 44, 46, 53, 58**

<b>Interval</b>	<b>Frequency</b>	<b>Relative Frequency</b>	<b>Percentage</b>
<b>10 but less than 20</b>	<b>3</b>	<b>.15</b>	<b>15</b>
<b>20 but less than 30</b>	<b>6</b>	<b>.30</b>	<b>30</b>
<b>30 but less than 40</b>	<b>5</b>	<b>.25</b>	<b>25</b>
<b>40 but less than 50</b>	<b>4</b>	<b>.20</b>	<b>20</b>
<b>50 but less than 60</b>	<b>2</b>	<b>.10</b>	<b>10</b>
<b>Total</b>	<b>20</b>	<b>1.00</b>	<b>100</b>



# Histogram

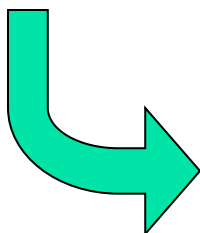
---

- A graph of the data in a frequency distribution is called a **histogram**
- The **interval endpoints** are shown on the horizontal axis
- the **vertical axis** is either **frequency, relative frequency,** or **percentage**
- Bars of the appropriate heights are used to represent the number of observations within each class

# Histogram Example

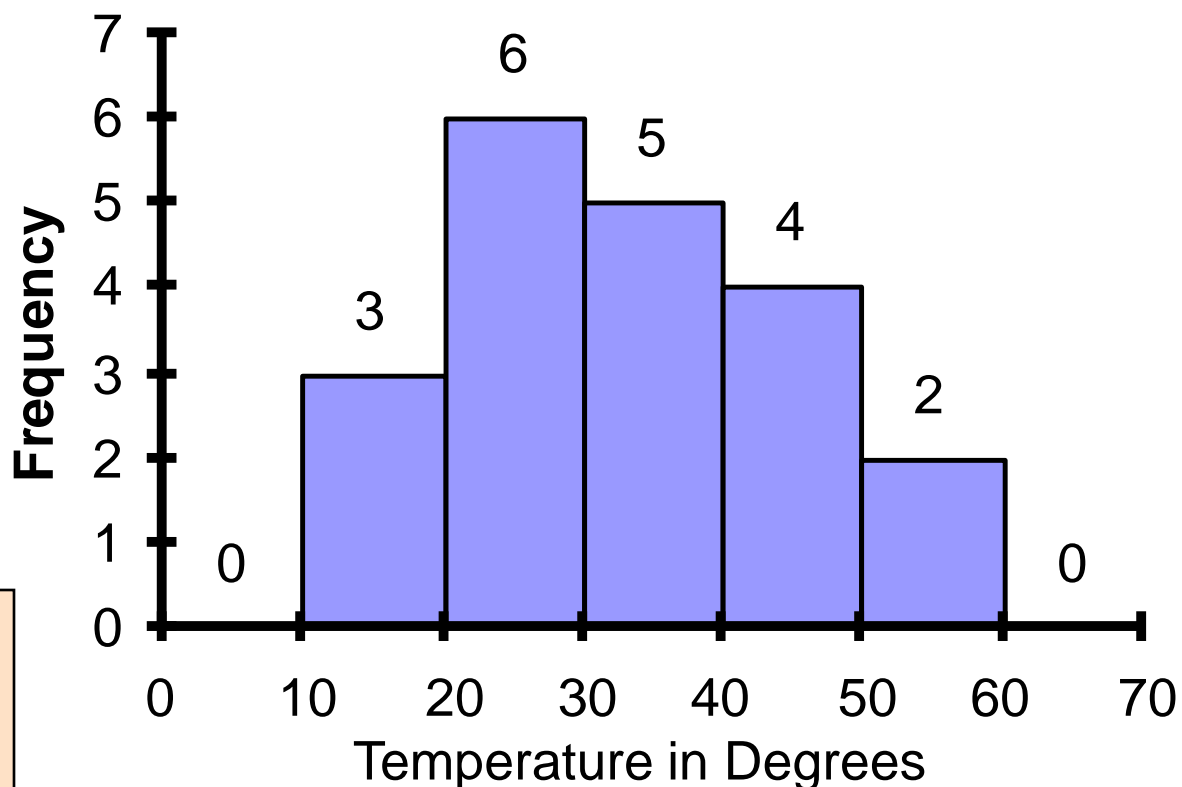


Interval	Frequency
10 but less than 20	3
20 but less than 30	6
30 but less than 40	5
40 but less than 50	4
50 but less than 60	2



(No gaps between bars)

## Histogram: Daily High Temperature



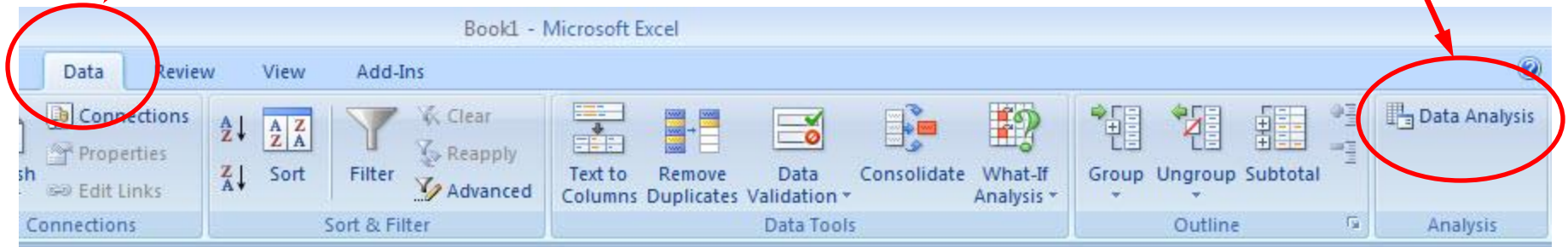
# Histograms in Excel

①

Select **Data** Tab

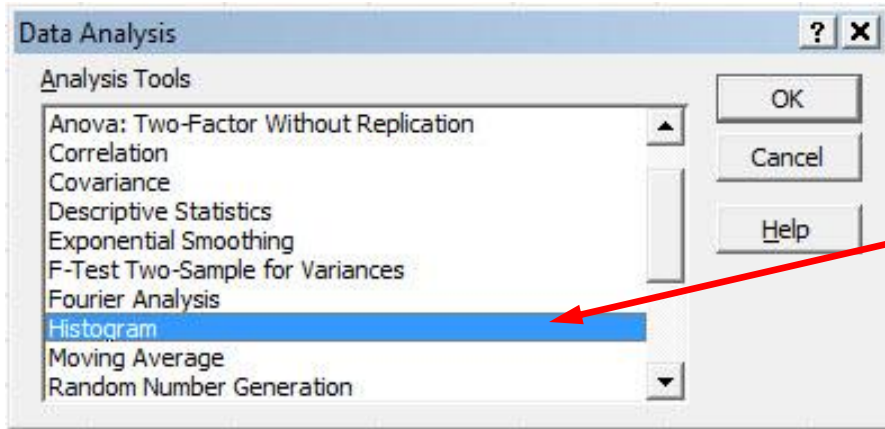
②

Click on **Data Analysis**



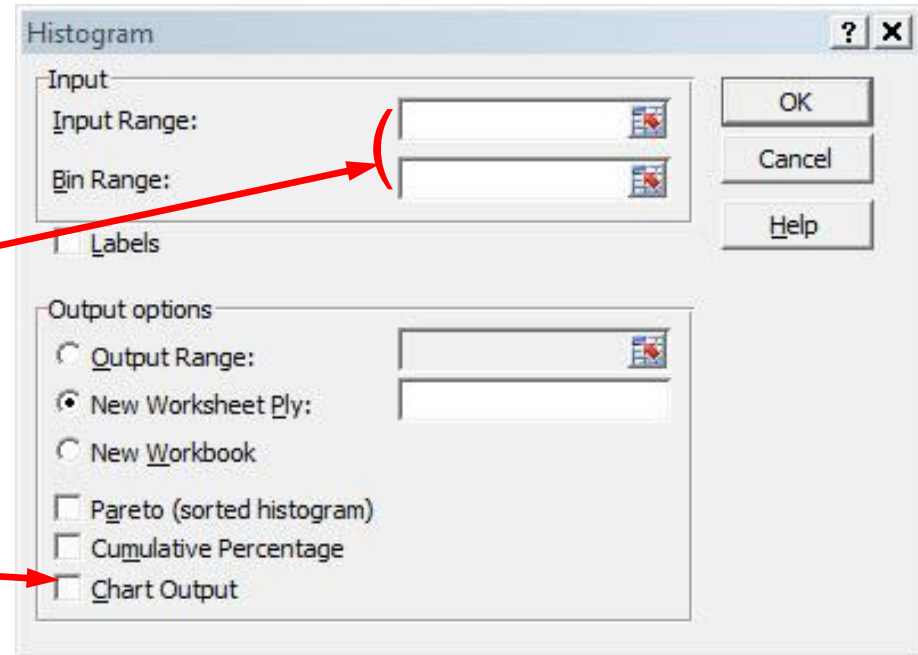
# Histograms in Excel

(continued)



3

Choose Histogram



4

Input data range and bin range (bin range is a cell range containing the upper interval endpoints for each class grouping)

Select Chart Output and click "OK"

# Questions for Grouping Data into Intervals



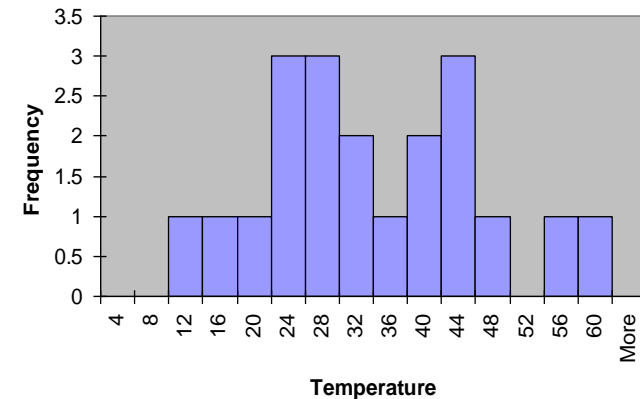
---

- 1. How wide should each interval be?  
(How many classes should be used?)
  
- 2. How should the endpoints of the intervals be determined?
  - Often answered by trial and error, subject to user judgment
  - The goal is to create a distribution that is neither too "jagged" nor too "blocky"
  - Goal is to appropriately show the pattern of variation in the data

# How Many Class Intervals?

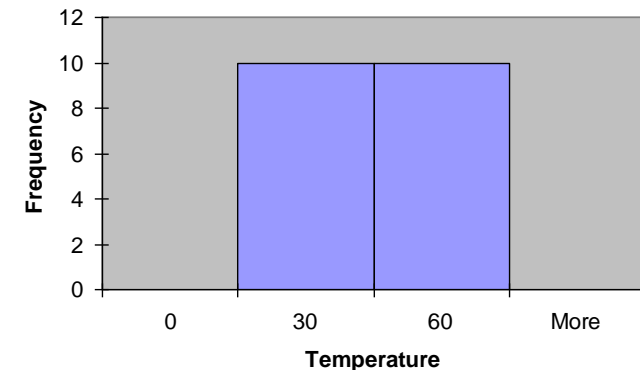
## ■ Many (Narrow class intervals)

- may yield a very jagged distribution with gaps from empty classes
- Can give a poor indication of how frequency varies across classes



## ■ Few (Wide class intervals)

- may compress variation too much and yield a blocky distribution
- can obscure important patterns of variation.



(X axis labels are upper class endpoints)



# The Cumulative Frequency Distribution

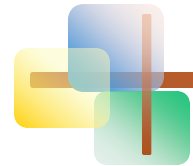
Data in ordered array:

12, 13, 17, 21, 24, 24, 26, 27, 27, 30, 32, 35, 37, 38, 41, 43, 44, 46, 53, 58

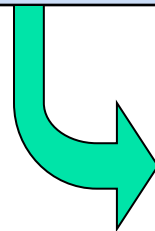
<b>Class</b>	<b>Frequency</b>	<b>Percentage</b>	<b>Cumulative Frequency</b>	<b>Cumulative Percentage</b>
10 but less than 20	3	15	3	15
20 but less than 30	6	30	9	45
30 but less than 40	5	25	14	70
40 but less than 50	4	20	18	90
50 but less than 60	2	10	20	100
<b>Total</b>	<b>20</b>	<b>100</b>		

# The Ogive

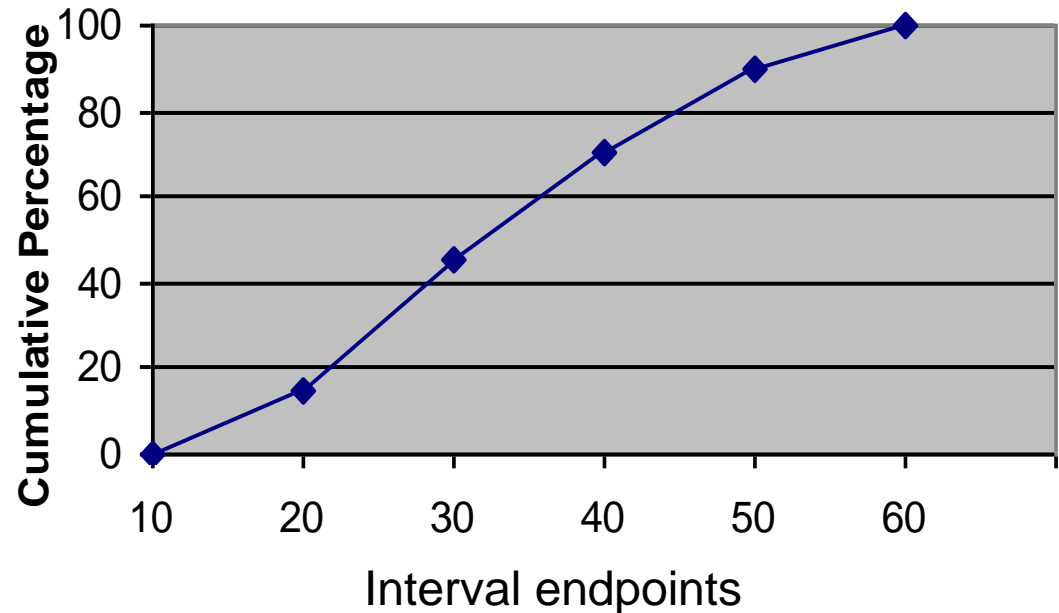
## Graphing Cumulative Frequencies



Interval	Upper interval endpoint	Cumulative Percentage
Less than 10	10	0
10 but less than 20	20	15
20 but less than 30	30	45
30 but less than 40	40	70
40 but less than 50	50	90
50 but less than 60	60	100



Ogive: Daily High Temperature





# Stem-and-Leaf Diagram

---

- A simple way to see distribution details in a data set

METHOD: Separate the sorted data series into leading digits (the **stem**) and the trailing digits (the **leaves**)

# Example

## Data in ordered array:

21, 24, 24, 26, 27, 27, 30, 32, 38, 41

- Here, use the 10's digit for the stem unit:

- 21 is shown as

- 38 is shown as

Stem	Leaf
2	1
3	8

# Example

(continued)

## Data in ordered array:

21, 24, 24, 26, 27, 27, 30, 32, 38, 41

- Completed stem-and-leaf diagram:

Stem	Leaves
2	1 4 4 6 7 7
3	0 2 8
4	1

# Using other stem units

- Using the 100's digit as the stem:
  - Round off the 10's digit to form the leaves

	Stem	Leaf
■ 613 would become →	6	1
■ 776 would become →	7	8
■ . . .		
■ 1224 becomes →	12	2

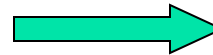
# Using other stem units

*(continued)*

- Using the 100's digit as the stem:
  - The completed stem-and-leaf display:

Data:

613, 632, 658, 717, 722, 750,  
776, 827, 841, 859, 863, 891,  
894, 906, 928, 933, 955, 982,  
1034, 1047, 1056, 1140, 1169,  
1224



Stem	Leaves
6	1 3 6
7	2 2 5 8
8	3 4 6 6 9 9
9	1 3 3 6 8
10	3 5 6
11	4 7
12	2



# Scatter Diagrams

---

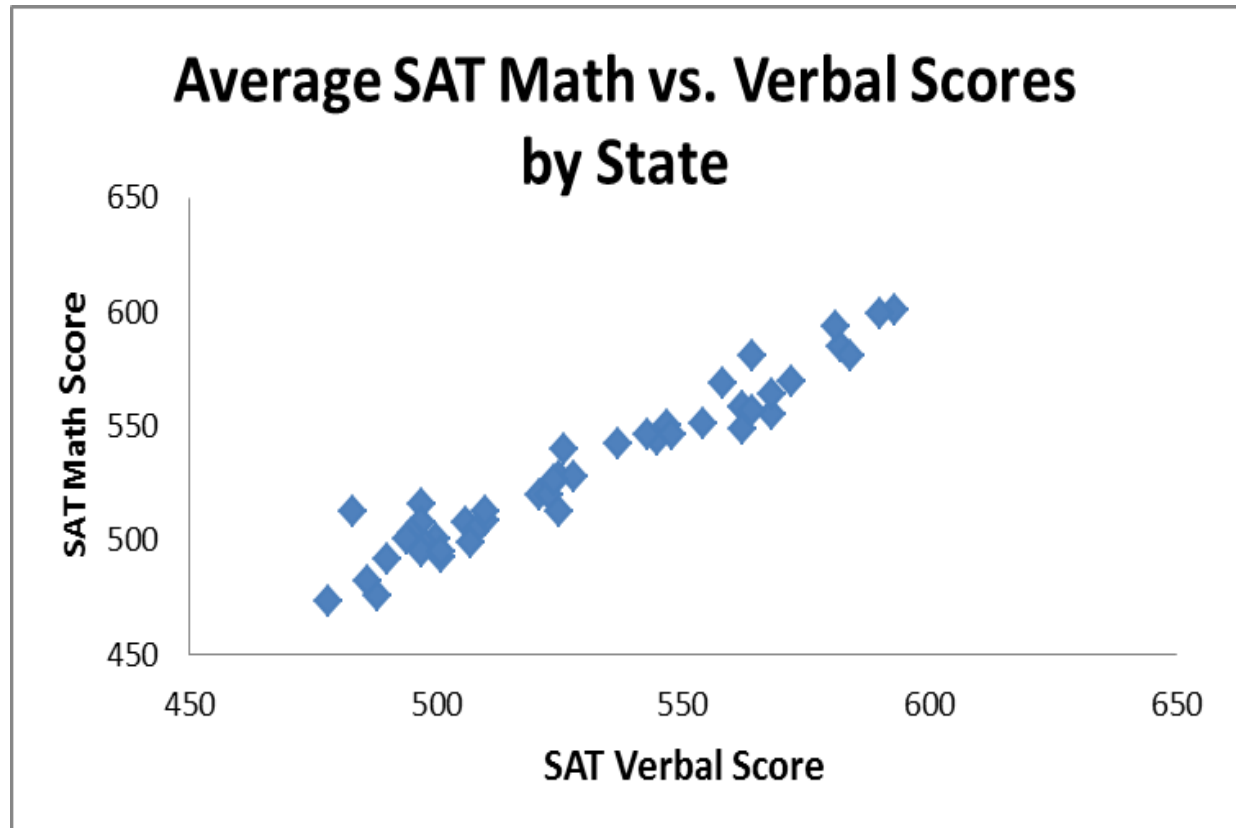
- **Scatter Diagrams** are used for paired observations taken from two numerical variables
- The Scatter Diagram:
  - one variable is measured on the vertical axis and the other variable is measured on the horizontal axis



# Scatter Diagram Example

Average SAT scores by state: 1998

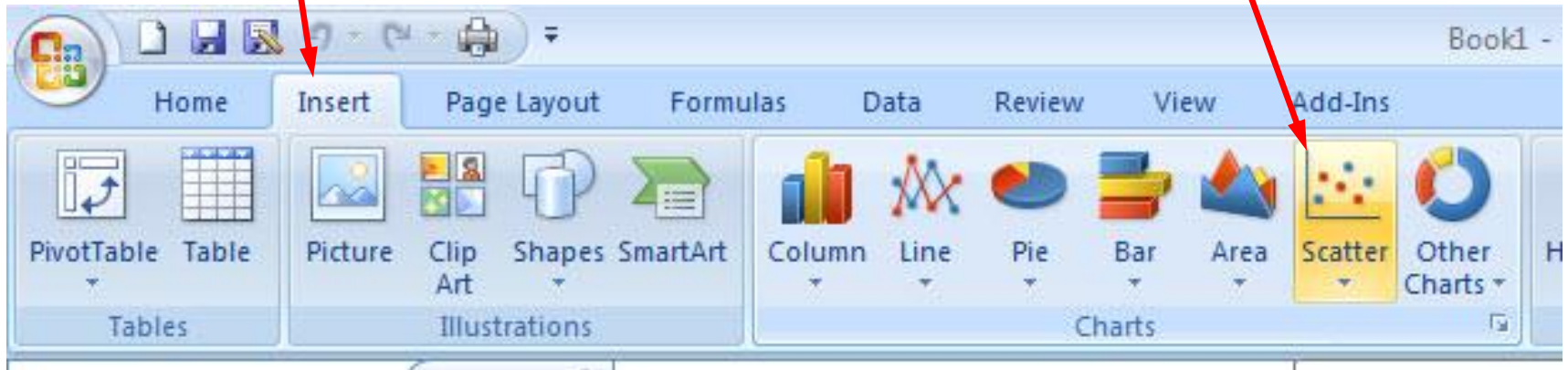
	Verbal	Math
Alabama	562	558
Alaska	521	520
Arizona	525	528
Arkansas	568	555
California	497	516
Colorado	537	542
Connecticut	510	509
Delaware	501	493
D.C.	488	476
Florida	500	501
Georgia	486	482
Hawaii	483	513
...		
W.Va.	525	513
Wis.	581	594
Wyo.	548	546



# Scatter Diagrams in Excel

1 Select the **Insert** tab

2 Select **Scatter** type from the Charts section



3 When prompted, enter the data range, desired legend, and desired destination to complete the scatter diagram

# Data Presentation Errors

---

Goals for effective data presentation:

- Present data to display essential information
- Communicate complex ideas clearly and accurately
- Avoid distortion that might convey the wrong message

# Data Presentation Errors

*(continued)*

- Unequal histogram interval widths
- Compressing or distorting the vertical axis
- Providing no zero point on the vertical axis
- Failing to provide a relative basis in comparing data between groups





# Chapter Summary

---

- Reviewed incomplete information in decision making
- Introduced key definitions:
  - Population vs. Sample
  - Parameter vs. Statistic
  - Descriptive vs. Inferential statistics
- Described random sampling
- Examined the decision making process





# Chapter Summary

---

*(continued)*

- Reviewed types of data and measurement levels
- Data in raw form are usually not easy to use for decision making -- Some type of organization is needed:
  - ◆ Table
  - ◆ Graph
- Techniques reviewed in this chapter:
  - Frequency distribution
  - Cross tables
  - Bar chart
  - Pie chart
  - Pareto diagram
  - Line chart
  - Frequency distribution
  - Histogram and ogive
  - Stem-and-leaf display
  - Scatter plot



**This work is protected by United States copyright laws and is provided solely for the use of instructors in teaching their courses and assessing student learning. Dissemination or sale of any part of this work (including on the World Wide Web) will destroy the integrity of the work and is not permitted. The work and materials from it should never be made available to students except by instructors using the accompanying text in their classes. All recipients of this work are expected to abide by these restrictions and to honor the intended pedagogical purposes and the needs of other instructors who rely on these materials.**

All rights reserved. No part of this publication may be reproduced, stored in a retrieval system, or transmitted, in any form or by any means, electronic, mechanical, photocopying, recording, or otherwise, without the prior written permission of the publisher.

Printed in the United States of America.